



# Finger Lakes Woodturners I

A Special Interest Group of the  
Rochester Woodworkers Society  
and a Chapter of

The American Association of Woodturners



Pg	Contents
1	<ul style="list-style-type: none"> <li>• From the Chair</li> <li>• Calendar of Events</li> </ul>
2	<ul style="list-style-type: none"> <li>• Hints &amp; Pointers</li> </ul>
3	<ul style="list-style-type: none"> <li>• Oct &amp; Nov Treasurer's Reports</li> </ul>
4	<ul style="list-style-type: none"> <li>• November's Featured Talk: "Platters &amp; Christmas Trees," by Erv Tschanz</li> </ul>
5	<ul style="list-style-type: none"> <li>• "How Are Your Lathe Bearings," by Jim Echter</li> </ul>
6	<ul style="list-style-type: none"> <li>• From the Editor</li> <li>• Classified Ads</li> </ul>
7	<ul style="list-style-type: none"> <li>• Mentor Contacts</li> <li>• FLWT I Board of Directors</li> </ul>
8	<ul style="list-style-type: none"> <li>• Photos from Show &amp; Share</li> </ul>

December's Holiday party will be held at Pieters Family Life Center, 1025 Commons Way, Roch 14623  
*Nov 07 meeting attendance was 33.*

## From the Chair by Mike Hachey



I may be naive, ... but, ... I still believe in Santa Claus. As we get older, Santa likes a little help in finding out what's on our Christmas list. I create a long list of turning tools and accessories and a short list of what my new lathe should look like. I'm the first to admit, I don't deal directly with Santa; he's too busy at the mall with the younger generation. I do

is deal with are his helpers. I leave hints all around the house in hopes that my wife or daughter will pass these messages on to the right person (it kind of reminds me of the little kid who wanted a BB gun). I used to leave a note here or there, but that didn't seem to work. This year I'm leaving entire wood-working catalogs with numerous items checked, circled and high-lighted.



*Mike hung his stocking the day after Labor Day just in case Santa was making any test runs with his new sleigh!*

Calendar of Events & Courses			
2007 / 08		Event	For More Info
Dec	20	Christmas party, 6-9 PM, at Pieters, tool swap and candlestick challenge	See "From the Chair," on page 2 of this issue
Feb	2	Harvesting Wood and Turning Green Bowls demo by Ed Demay	<a href="http://www.rochesterwoodworkers.org/">http://www.rochesterwoodworkers.org/</a>
Apr	2	Turning Pens & Bottle Stoppers workshop by Mike and Debbie H.	<a href="http://www.rochesterwoodworkers.org/">http://www.rochesterwoodworkers.org/</a>
Apr	18-19	Woodturner Don Geiger talk and demo	<a href="http://www.rochesterwoodworkers.org/">http://www.rochesterwoodworkers.org/</a>
May	22-24	Utah Symposium, Utah Valley State College (Note new date & place)	<a href="http://www.woodturner.org/">http://www.woodturner.org/</a>
Jun	20-22	22nd Annual AAW Symposium, Richmond, VA	<a href="http://www.woodturner.org/sym/sym2008/">http://www.woodturner.org/sym/sym2008/</a>

---

## From the Chair (cont'd)



As long as I'm in the Christmas spirit, don't forget our annual Christmas party on December 20<sup>th</sup> at the Pieters Life Center, just a few blocks from the Woodcraft store. This will be a great event lasting from 6:00 to 9:00 PM. For refreshments, there will be Pizza, Chicken Wings, Soft Drinks and Coffee. Also planned are 1) Silent Auction of the club's prestigious, one of a kind, Treadle Lathe, 2) Silent Auction of Club #2's turning tools, 3) a Tool Swap, 4) Challenge Project display and drawing – Candle Stick, 5) our regular Show and Share, and most important 6) a chance to socialize with fellow members.

Any proceeds received from the Silent Auctions will go to the treasury of the appropriate club. Proceeds for the tool swap will go to the selling member, so now is the time to bring all your duplicate tools or tools you no longer use or need and find them a new home. There will be two drawings for the evening, one for the Challenge Project and one for the show and share. By the way, did I mention Pizza and Wings? At the December meeting we will also announce the number of TOPS that were completed and delivered to the Children's Hospital. It looks like Club #2 has turned the most TOPS but we will wait until the final count is in.

Winter has arrived in Rochester several weeks before it's time. The good news is that it's giving many of us a chance to get down into our shops instead of dealing with the snow. Debbie and I have already decided our Challenge Project will be complete two weeks ahead of time instead of the normal four hours before the meeting. (HA, HA, HA, or is that suppose to be HO, HO, HO).

## Hints & Pointers

For you bowl turners, I came across a book by Dick Sing in which he shows how use a flexible metal ruler to help ensure nice looking contours on bowls. (I happen to have a narrow piece of 10 mil flexible shim stock, about 1/2 inch wide by 12 inches long, which also does the trick). This works only on bowls with smooth continuous curves and not on those with complicated contours. According to Dick, if you hold one end of the ruler against the outside contour at the bowl's base, and then flex the other end against the bowl at its rim, you shouldn't see any gaps. I've found that when I use this technique, I have yet to produce a contour I didn't like. I also checked some bowls I had made previously that didn't look right and found they had gaps - sometimes in 2 or 3 places - between the bowl contour and flexible shim. That said, I also found some bowls I had previously made that I thought looked great that didn't conform to the flexible shim. But in those cases, I noticed just one gap that grew uniformly larger and then smaller. So, give this a try and see if it's as helpful to you as it has been to me. Dave Smith



---

# Treasurers Report(s) by Kevin Hart

## Period 10/1/07—10/31/07

### Financial Summary

<b>Beginning Balance</b>	<b>\$1,430.39</b>
Total Income	\$110.00
Total Expenses	\$59.20
<b>Closing Balance<sup>1</sup></b>	<b>\$1,481.19</b>

### Income / Expense Statement

Income		Expenses	
Dues & New member fees	\$95.00	Show & Share gift card	\$10.00
50/50	\$15.00	Jaws for chuck	\$33.00
		Name tags	16.22
<b>Total Income</b>	<b>\$110.00</b>	<b>Total Expenses</b>	<b>\$59.20</b>

## Period 11/1/07—11/30/07

### Financial Summary

<b>Beginning Balance</b>	<b>\$1,481.19</b>
Total Income	\$8.00
Total Expenses	\$10.00
<b>Closing Balance<sup>1</sup></b>	<b>\$1,479.19</b>

### Income / Expense Statement

Income		Expenses	
Dues & 50 / 50	\$8.00	Show & Share gift card	\$10.00
<b>Total Income</b>	<b>\$8.00</b>	<b>Total Expenses</b>	<b>\$10.00</b>

*The Finger Lakes Woodturners I Club greatly appreciates the facilities and support provided by Woodcraft, Henrietta Plaza, 1100 Jefferson Road, Henrietta, New York 14623. Thanks Sean!*



## November's Featured Talk

Presented by Erv Tschanz

Summary by Kevin Hart Photos by Dave Smith



Erv Tschanz gave us a two for one price demo in November. In the first half he showed us how he turns wooden plates (or small platters) and some of the tools he uses. Of special note were the heavy scrapers he uses to finish his plates and platters, as well as some custom-made scrapers. These latter tools have spear points, ground by Erv from inexpensive Penn State

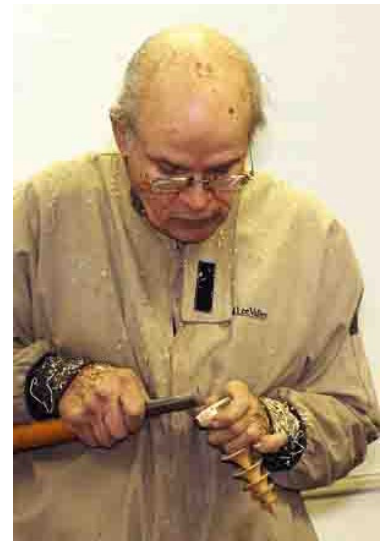


Industries HSS scrapers. They allow Erv to get into corners where a "regular" square edge scraper will not.

The bottoms of the plates aren't really turned, so Erv begins by planing his blanks flat using a hand plane. He then mounts the blanks to waste blocks using cardboard and a water soluble glue (the original Titetbond™), which after turning makes splitting off with a chisel and scraping clean a fast process. The blank is mounted via a screw chuck, although it could be mounted in a four-jaw chuck. But the screw chuck is quicker (no need to turn a spigot for the chuck to hold).



In the second part of his demo, Erv gave a very timely lesson on turning Christmas trees from Yew limbs. Erv says the Yew works well for this project because even when turned wet, it won't usually split. The key to a good looking tree is the spacing of the "branches." Each "branch" should be spaced an 1/8" further apart than the one above it.



Thank you and great job Erv!





## How Are Your Lathe Bearings? By Jim Echter



The days are short, the frost is on the pumpkin, the golf clubs have been put away and we are starting to spend more time in our workshops. We fire up our grinders, sharpen our tools, and maybe even clean up around the lathe. After roughing out a blank, we try to get a nice finish cut on a surface, only to find out that there are small chatter marks all around the piece. If we rule out our tool control, change the lathe speed, resharpen our tool, lighten up on our pressure and still get the chatter, chances are our bearings are shot.

Ernie Conover suggests that you change your lathe bearings at a minimum every 3 to 4 years. Those of us that use our lathes a little more often may want to change them much more frequently.

Several years ago there was a lively debate within the club membership as to whether or not you should bolt a lathe down to the floor. The main argument against doing that was that the bearings were so “expensive” to replace. The same argument was used against tapping your blank into a drive center already mounted in the headstock.

Well, here is a reality check. Bearings are inexpensive and easy to change. I recently helped a member change the bearings in his 20+ year old Woodfast lathe (with those “expensive” bearings). It took us 35 minutes and the bearings cost \$6.85 each. Now the Woodfast lathe is a great machine; much better than my old Delta. One of the main differences is that it uses 3 bearings instead of 2! It still cost less than \$20 to swap the bearings.

Here is the process. Your lathe may be somewhat different but they’re all fundamentally the same and the process is similar for Deltas, Jets, Grizzlies, and Woodfasts.

### Up Front Work

1. Find your owner’s manual (if you can’t... don’t worry since it most likely won’t tell you the bearing numbers anyway.)
2. If you can see the bearings, get the bearing number from the dust ring. It is usually about a 6-8 letter/number combination. The bearings may be the same or different on the inboard and outboard ends of the spindle so you need to check both ends. You can see the bearing numbers on a Woodfast. On my Delta and Powermatic 90, I had to remove the bearing end caps to expose the bearings. The end caps are typically held on with 4-8 screws. The Woodfast uses 3 identical bearings, my Delta and Powermatic use 2 different sized bearings.
3. Call BDI, a bearing distributor, and see if they have the bearings in inventory or if they have to order them in. Go over with your \$20 bill and pick them up. (*BDI Inc., 1387 Fairport Rd, Suite 850, Fairport, NY 14450 Phone:585- 377-6910.*)
4. Assemble your Spindle wrenches, Allen wrenches, lead or brass hammer and wood/brass drifts.



---

## How Are Your Lathe Bearings? (cont'd)

### **Steps to Changing Your Bearings:**

1. Unplug motor from power source
2. Remove belt from motor and bring to top of lathe (use belt to hold pulley)
3. Check the belt to see if it needs replacing as now is the time to do it.
4. Remove hand wheel (left hand thread)
5. Loosen setscrew and remove nut (left hand thread)
6. Loosen 2 setscrews on pulley
7. Knock spindle out – hand wheel side towards tailstock (*left to right*). Use lead or brass hammer and wood/brass drifts so you don't damage the spindle.
8. Support the pulley with the belt so it doesn't drop to the floor.
9. Remove "C" clip which retains the inboard or "tailstock" bearing
10. Remove bearings
11. Replace bearings
12. Use old bearings as "drivers" to install the new bearings
13. Reinstall "C" clip
14. Reinstall spindle with the pulley and any spacers into the headstock.
15. Reinstall set screws (line up holes in spindle, they were drilled for the setscrews)
16. Reinstall nut and setscrew
17. Reinstall hand wheel
18. Reinstall the belt and plug motor back into the power source.

Yes, that's it! It's that simple and something we all should do more often.

## From the Editor by Dave Smith

I'd like to extend our club's thanks to Erv for his great November demo and to Jim Echter for his great article on lathe bearings. We always need material for the newsletter so please send me anything you've got whether it be an article or a tip for "Hints and Pointers." I'd also like to wish everyone a wonderful and safe holiday season. And finally, Mike, I don't think a new lathe is going to fit in that stocking!

## Classified Ads

### **For Sale**

- Jet DC-1200C dust collector. 2 HP, Cartridge filter with paddle cleaner, 1200 CFM, Excellent cond. \$400.  
Email [dsmith43@rochester.rr.com](mailto:dsmith43@rochester.rr.com) or Tel 244-1535

### **Wanted to Buy**

- Does anyone want to buy any turning or woodworking tools? If so, please email the editor.



# Mentor Contacts<sup>1</sup>

Name	Day Tel	Eve Tel	Email	Skills / Specialty
Bill Tschorke	865-1971	865-1971		General turning
Tom Pedlow		237-3962		General turning
Erwin A. Tschanz	271-5263 (Dec – Mar)	271-5263		Historical pieces, Bowls, Plates, Goblets, Boxes, Boney antler horn
Ralph Moser	359-0986	359-0986	<a href="mailto:ralphmoser@frontier.net">ralphmoser@frontier.net</a>	Faceplate turning, bowls, etc.
Jim Echter	377-9389	377-9389	<a href="mailto:jechter@rochester.rr.com">jechter@rochester.rr.com</a>	Spindle & faceplate turning, sharpening
Lou Stahlman	248-2097	248-2097	<a href="mailto:lstahlman@rochester.rr.com">lstahlman@rochester.rr.com</a>	How to cut wood

- Here's a great way for you to improve your turning skills.** FLWT I has award winning and expert turners who, at no cost, are willing to share their expertise one-to-one with other club members. In some cases, mentoring may be as simple as getting advice from a mentor in a one time conversation. In other cases, it may expand to include regular hands-on sessions over a lathe. The exact nature is up to you and your mentor. If you feel you could benefit from mentoring, please organize your thoughts about your needs and expectations and then contact an appropriate volunteer mentor above to determine if he or she is a match and available.

## FLWT I Board of Directors 2007—2008

Position	Name	Day Tel	Eve Tel	Email
<b>Chair</b>	Mike Hachey	723-1395	723-1395	<a href="mailto:hacheymd@aol.com">hacheymd@aol.com</a>
<b>Treasurer</b>	Kevin Hart	442-5789	442-5789	<a href="mailto:kdhart@rochester.rr.com">kdhart@rochester.rr.com</a>
<b>Secretary &amp; Newsletter Editor</b>	Dave Smith	244-1535	244-1535	<a href="mailto:dsmith43rochester.rr.com">dsmith43rochester.rr.com</a>
<b>Tool Librarian</b>	TBD	-	-	
<b>Advisors</b>	Rich Connelly	889-4996	889-4996	<a href="mailto:rconnell@rochester.rr.com">rconnell@rochester.rr.com</a>
	Bill Costanzo	865-3866	865-3866	<a href="mailto:adsdad@rochester.rr.com">adsdad@rochester.rr.com</a>
	Jim Echter	377-4838	377-4838	<a href="mailto:jechter@rochester.rr.com">jechter@rochester.rr.com</a>
	Debbie Hachey	723-1395	723-1395	<a href="mailto:hacheymd@aol.com">hacheymd@aol.com</a>
	Jim Hotaling	223-4877	223-4877	<a href="mailto:jhotal2198@aol.com">jhotal2198@aol.com</a>
	Bill Tschorke	865-1971	865-1971	



**Show and Share** Photos by Dave Smith



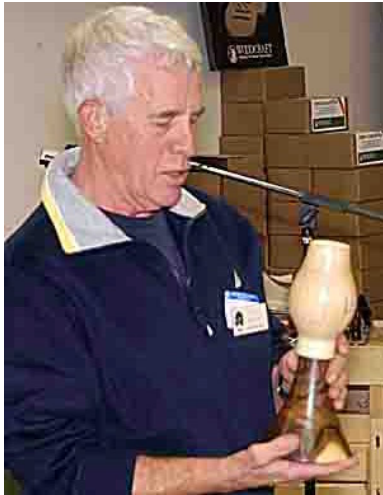
**Dave Schwardt**



**Dan Meyerhofer**



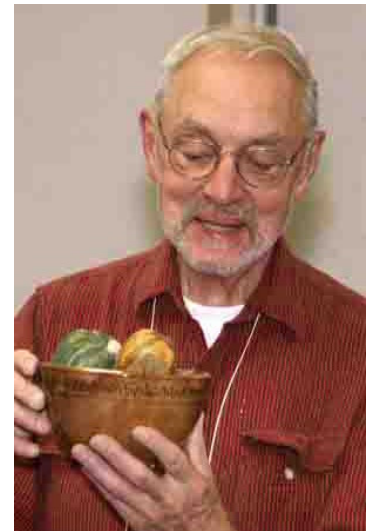
**Ed Lehman**



**Harry Beaver**



**Bill McColgin**



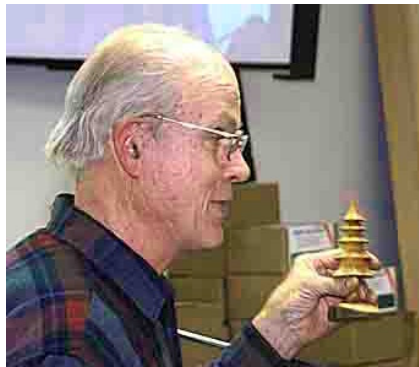
**Jim Hotaling**



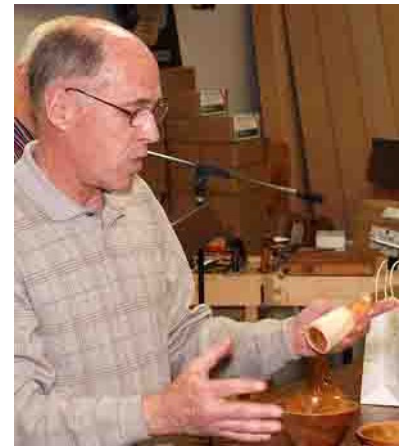
**Dave Smith**



**Rich Connelly**



**Erv Tschanz**



**Tom Pedlow**

**Jim Echter—brought tops but passed them out too fast for the photographer to snap his photo. Sorry Jim!**