



Finger Lakes Woodturners

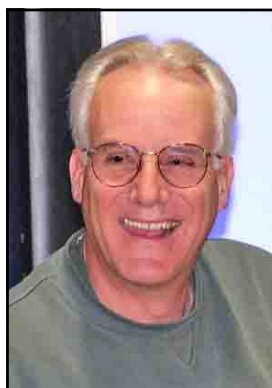
A Special Interest Group of the
Rochester Woodworkers Society
and a Chapter of
The American Association of Woodturners



Pg	Contents
1	• From the Chair
2	• FLWT Activity Committee Captains, 2008 - 2009 Season • RWS Request For Input
3	• Top-A-Thon Event • Calendar of Events & Courses
4	• October Demonstration: "Making Salad Utensils" by Ed Lehman
5	• Treasurer's Report • Turning Tips • Classified Ads
6	• Mentor Contacts • FLWT Board of Directors
7	• Photos From Oct 08 Meeting's Show & Share

FLWT meetings are held from 6:30 to 9:00 PM on the 3rd Thursday of each month at Al Sigi CP Rochester, 3399 Winton Road South in Henrietta.

From the Chair by Jim Echter



The October meeting was a busy one! I want to thank all the people that agreed to be Committee Captains, especially Cliff Weatherell, who volunteered first. Cliff was rewarded for his

bravery with a gift card that is worth half of his annual club dues. FLWT has become a large organization and because of our success,

it really will take the help of every member to keep it growing and thriving. The list of committee captains is printed on page 2 in this newsletter for your reference. For those that were not at the October meeting, 14 of your peers agreed to help the club out by heading up activity committees. All FLWT members are expected to sign up with at least one committee and help give back to the club. There is a wide variety of committees, so no matter where you are in your turning career there is a committee you can participate on. Be it the Program Committee or by helping push a broom for the Clean-up Committee. Thank you to everyone who has already signed up for at least one committee. Your Board looks forward to achieving 100% membership participation in the near future.

Ed Lehman gave a great presentation by last month on turning salad utensils. I know I've been thinking about what I'm going to make for Christmas presents this year. These are now high on my list. Thanks Ed.

Thank you to Tom Pedlow for helping raise funds for the club by selling some nice turning blanks. Tom added \$15 to the club treasury.

This month, we're going to have a demonstration by Ralph Moser on Offset Turning. For those who haven't been exposed to offset turning, you're in for a real treat. You can make some wild looking things with this technique. This is one demo you won't want to miss.

(cont'd)

From the Chair (cont'd)

This article was written prior to our first Top-A-Thon. Thanks again to Committee Captain Cliff Weatherell for helping to coordinate the event. We'll report on the event later in November. I'm sure it will be a fun event and expose some new turners to making tops. FLWT has for several years now made spin tops as our annual charity project. Remember to bring your tops to the November meeting.

Christmas Party Update! The December meeting date has changed. It is now on Tuesday December 16th at the Pieter's Life Center where we had it last year. Please go to your calendar and change the meeting from Thursday to Tuesday the 16th right now. Contact Jim Gilson, the Social Committee Captain, if you can help plan the party.

The Challenge Project for the December meeting is: Platters. So get busy making a platter or plate to show off at the Christmas Party, on Tuesday December 16th.

Keep your bevels rubbin'...

Jim

FLWT / RWS Activity Committee Captains, 2008 - 2009 Season

FLWT Committee	Captain	Telephone	Cell	Email
Camera/Video/Audio	Dave Schafer	328-0703		deadeyekcb@yahoo.com
Presenter Equipment Set-up	Marty Chatt	533-1189		mchatt8@aol.com
Chairs and Display Table Take Down	Doug Crittenden	924-5903		cleo99@frontiernet.net
Meeting Greeter	Mike Hachey	723-1395		hacheymd@aol.com
Cleanup	Shirley Robbins	(315) 573-7228		srobbins002@rochester.rr.com
Tops for Strong	Cliff Weatherell	737-7815		canoeboy@rochester.rr.com
Lathe Carts (General & Mini)	Harry Stanton	(315) 986-1548		harry_c_stanton@yahoo.com
Youth Outreach	Jerry Sheridan	494-1889		cgs1122@hotmail.com
Marketing	Dale Osborne	(315) 524-7212		dosborn3@rochester.rr.com
Social	Jim Gilson	509-3704		gilson1@frontiernet.net
Program Committee	Sandy Dusel	(315) 524-8519		pdusel@sprintmail.com
Newsletter Articles				
Member Surveys	Lee Spencer	(315) 597-8941		lspencer@isaacheating.com
RWS Speaker Committee	Al Scheg	352-0884	301-5713	scheg@rochester.rr.com
RWS SIG Liaison	Mike Hachey	723-1395		hacheymd@aol.com

RWS Requests Turning SIG Input

The RWS has advised that its selection team for the 2009 - 10 national speaker line-up needs input from Turning SIG members regarding the short list of turning candidates generated at its October 29 team meeting. Those candidates are: Mark St. Leger (www.markstleger.com); Al Stirt (www.alstirt.com); and Malcom Zander (www.malcomzander.com). If you want to weigh in on these or other potential speakers, please contact Al Scheg (shown in the table above).

Top-A-Thon Is a Great Success!

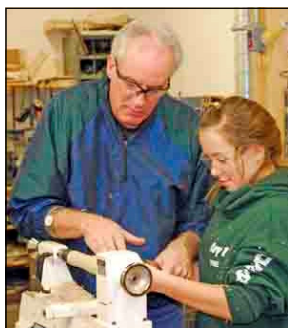
Summary by Kevin Hart

Photos by Members

Almost 30 Turning SIG members converged on CP Rochester Saturday, November 8 for our first Top-A-Thon, to make tops for the kids at Golisano Children's Hospital. Jim Echter gave a short demonstration on how to turn a top, and additional instruction was provided to individual members by Irv Tschanz, Ed Demay, and Doug Crittenden.

Among the people attending were Kelly Byrne, daughter of member David Byrne and Kelly's friend Becca Kester. They got their first

lessons in turning from Jim Echter, and hope to use the tops in fulfilling a high school graduation requirement for community service. Experience among SIG members who came ranged from "never turned a top," to highly experienced. We also learned that Ralph Mosher has his own top decorator, his grand daughter Olivia Diogadrdi.



Cliff Weatherell coordinated the event for the group, making sure that turners had assigned time slots, finding help to get the refreshments and supplies and ensuring there were crews to set up and clean up. Altogether the participating members produced 50 tops, with Jim Hotaling acting as QA Manager and testing each top for spin time. Thanks to Ed DeMay, who got great coverage for both the Top-A-Thon and the RWS in the Sunday Democrat and Chronicle!



Calendar of Events & Courses

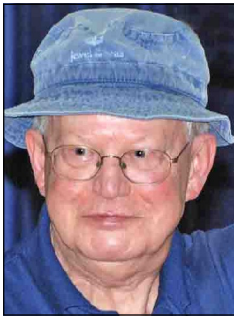
2008 - 09		Event	For More Info
Oct	25	Ed DeMay & Mike Hachey: Series 2 - "Turning Bowls"	www.rochesterwoodworkers.org/events.htm
Nov	15	Ed DeMay & others: Series 3a - "Turn Useful Objects"	www.rochesterwoodworkers.org/events.htm
Nov	20	RWS Turning SIG meeting & presentation by Ralph Mosher: "Offset Turning"	
Nov	25	FLWT Board Of Directors meeting	
Dec	6	Ed DeMay & others: Series 3b - "Turn Useful Objects"	www.rochesterwoodworkers.org/events.htm
Dec	16	RWS Turning SIG Christmas party at Pieter's Family Center. Challenge project: Platters	
Dec	20	Kert Hertzog - Turning Series 4: Introduction to Spindle Turning	www.rochesterwoodworkers.org/events.htm
Dec	23	FLWT Board of Directors meeting	
Feb	20 - 21	Alan Lacer: "Befriending the Skew"	www.rochesterwoodworkers.org/events.htm
Mar	28 - 29	Totally Turning Symposium, Saratoga Springs, NY.	www.totallyturning.com/

October Demonstration: Making Salad Utensils

by Ed Lehman

Summarized by Kevin Hart & Dave Smith

Photos by Dave Smith



Ed Lehman

At the October meeting, Ed Lehman showed us how to make salad servers to go along with the salad bowls we might turn. He showed two types of servers: those with and those without turned handles.

The servers without turned handles were cut out on a band saw or jigsaw, cutting the profile first. Ed's band-sawed servers had a graceful curve, that not only looked good, but had the practical advantage of keeping the server resting on the edge of the bowl and out of the salad. After cutting out the shape, these were then sanded and finished.

For the servers with turned handles, the handles were turned rough round, and then tapered using a roughing gouge followed by a skew. The handles could then be sanded, and Ed suggested that steel wool (0000) could also be used. The "business end" of the server was then cut on the band saw. Ed stressed cutting the inside of the curve first. He also suggested making templates for the ends, in various designs.

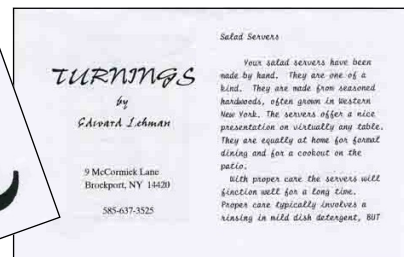


Final sanding on the "business end" was done on a homemade drum sander, which consisted of a motor (1750 rpm) with sanding drums mounted on each end of the shaft. One had a rough grit (80 or so) and the other a fine grit (220).



Ed includes a beautifully crafted note with the gift or sale of his salad bowls or utensils. The note states that the items are handcrafted by Ed, and made from

hardwoods - typically from Western NY.



A sample of Ed's crafted salad utensils

Ed also describes how to care for the wooden ware by periodically wiping with mineral oil and never washing in the dishwasher. Over time, any wooden ware will dull from use so to restore a shine, Ed advises rubbing the pieces with 0000 steel wool and then applying a tung oil finish.

A free "web book" "Turned for Use II" is available from the AAW website (<http://www.woodturner.org/>) in PDF format. All of the pieces presented are intended for use, and show that practicality and art are not mutually exclusive. Included is a piece by FLWT President Jim Echter.

Treasurers Report by Kevin Hart

Period 10/1/08 - 10/31/08

<u>Financial Summary</u>		
Beginning Balance	\$4,091.55	
Total Income	\$528.00	
Total Expenses	(\$67.96)	
Closing Balance	\$4,551.59	

<u>Income / Expense Statement</u>		
<u>Income</u>	<u>Expenses</u>	
50 - 50	\$18.00	Demonstrator's gift card (\$20.00)
Member's dues	\$465.00	Show & Share, 50 / 50 (\$20.00)
Gift certificates	\$30.00	Postage (last season's mailed newsletters) (27.96)
Other	\$15.00	
Total Income	\$528.00	Total Expenses (\$67.96)

Turning Tips

Here's your chance to share with your fellow turners. If you've discovered something you think would be of interest to other FLWT turners, please forward to the Editor via email for inclusion in the next newsletter.

- Ed DeMay forwarded a reference to an interesting pamphlet entitled "How to Do More With Your Wood Lathe," A Sears Roebuck Craftsman Handbook copyrighted in 1969. It's a 19-page reference which covers a wide range of topics including: mounting work, using your chisels, standard cuts, producing plain and fancy spindles, turning plastics, sanding and polishing, and wood finishing. If interested, go to <http://www.owwm.com/home.aspx> and then choose 'Craftsman' (the manufacturer) and "Instruction Guidelines" (the topic).
- If you own or have interest in old woodworking machines (including lathes), the web site above has a mind boggling collection of information and reprints of literature and manuals from hundreds of manufacturers, including many that are quite obscure. Several years ago, I found the original 1883 patent filing on my Berry & Orton 12 inch jointer on this site, complete with outline drawings, which I now have framed and hanging over my machine. (Editor)

Classified Ads

- Jet DC-1200C dust collector. 2 HP, Cartridge filter with paddle cleaner, 1200 CFM, Excellent cond. \$400. Email dsmith43@rochester.rr.com or Tel 244-1535
- Here's your opportunity to sell your excess wood and tools. Just email me with a description and price for the items you have to sell and I'll include them in the next newsletter. (Editor)

Mentor Contacts¹

Name	Day Tel	Eve Tel	Email	Turning Skills / Specialty
Doug Crittenden	924-5903	924-5903	cleo99@frontiernet.net	General
Ed DeMay	406-6111	924-5265	edemay@rochester.rr.com	Bowl turning, dust collection
Jim Echter	377-9389	377-9389	jechter@rochester.rr.com	Spindle & faceplate turning, sharpening
Jim Hotaling	223-4877	223-4877	jhotaling2198@aol.com	Christmas ornaments
Ed Lehman	637-3525		eljw@rochester.rr.com	General turning
Ralph Mosher	359-0986	359-0986	ralphmosher@frontiernet.net	Faceplate turning, bowls
Dale Osborne	(315) 524-7212	(315) 524-7212	dborn3@rochester.rr.com	General turning
Tom Pedlow		237-3962		General turning
Shirley Robbins	(315) 945-3363	(315) 573-7228	srobbins002@yahoo.com	Inside out decorations
Lou Stahlman	248-2097	248-2097	lstahlman@rochester.rr.com	How to cut wood
Erwin A. Tschanz	271-5263 (Dec – Mar)	271-5263		Historical, bowls, plates, goblets, boxes, bone, antler
Bill Tschorke	865-1971	865-1971		General turning

1. **Here's a great way for you to improve your turning skills.** FLWT has award winning and expert turners who, at no cost, are willing to share their expertise one-to-one with other club members. In some cases, mentoring may be as simple as getting advice from a mentor in a one time conversation. In other cases, it may expand to include regular hands-on sessions over a lathe. The exact nature is up to you and your mentor. If you feel you could benefit from mentoring, please organize your thoughts about your needs and expectations and then contact an appropriate volunteer mentor above to determine if he or she is a match and available.

FLWT Board of Directors 2008—2009

Position	Name	Day Tel	Eve Tel	Email
Chair	Jim Echter		377-4838	jechter@rochester.rr.com
Vice-Chair	Ed DeMay	406-6111	924-5265	edemay@rochester.rr.com
Treasurer	Kevin Hart	442-5789	442-5789	kdhart@rochester.rr.com
Secretary & Newsletter Editor	Dave Smith	244-1535	244-1535	dsmith43rochester.rr.com
Tool Librarian	Jim Hotaling	223-4877	223-4977	jhotal2198@aol.com
Advisors	Rich Connelly	889-4996	889-4996	rconnell@rochester.rr.com
	Bill Costanzo	865-3866	865-3866	adsdad@rochester.rr.com
	Ward Donahue	334-3178	334-3178	wddonah@frontiernet.net
	David Schafer	328-0703		deadeyekcb@yahoo.com
	Jim Hotaling	223-4877	223-4877	jhotal2198@aol.com
	Jerry Sheridan	738-4159	494-1889	cgs1122@hotmail.com

Show and Share

Photos by Dave Smith



Jerry Sheridan



Doug Crittenden



David Gould



Dave Butler



Jerry McCracken



Tom Corbett



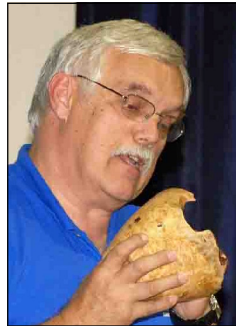
Dale Osborne



Ed Lehman



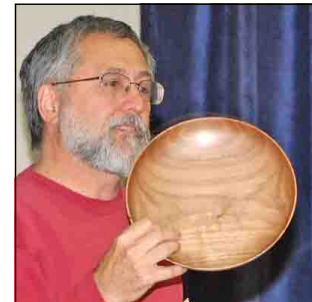
Dan Stoltman



Ed DeMay



Jim Hotaling



Gary Russell

Del Gross



Jeff Cheramie



Roger Laforce



Bill Tschorke



Craig Smith

