



Finger Lakes Woodturners

A Special Interest Group of the
Rochester Woodworkers Society
and a Chapter of

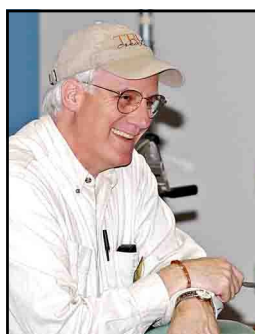
The American Association of Woodturners



Pg	Contents
1	<ul style="list-style-type: none"> From the Chair
2	<ul style="list-style-type: none"> Lecture and Demo to Optimist Club by Jim Hotaling Regional & National Woodturning Events of Interest
3	<ul style="list-style-type: none"> RWS & FLWT 2009 Calendar of Events
4	<ul style="list-style-type: none"> Jan Meeting <ul style="list-style-type: none"> Demo, "Napkin Rings" by Jim Hotaling Tool Review, "The Parting Tool" by Ward Donahue
5	<ul style="list-style-type: none"> Treasurer's Report FLWT Activity Committee Captains, 2008 - 2009 Season
6	<ul style="list-style-type: none"> Turning Tips Classified Ads Woodturning Limerick
7	<ul style="list-style-type: none"> Mentor Contacts FLWT Board of Directors
8	<ul style="list-style-type: none"> Photos From Jan 09 Meeting's Show & Share

FLWT meetings are held from 6:30 to 9:00 PM on the 3rd Thursday of each month at Al Sigi CP Rochester, 3399 Winton Road South in Henrietta.

From the Chair by Jim Echter



Last month I announced the new meeting formats that are an attempt at balancing out the programs to try to satisfy such a diverse group. At January's meeting, we had a wonderful demo on how to make napkin rings by Jim Hotaling and an overview

on parting tools by Ward Donahue. This month, we will have an extended Show and Share, a napkin ring challenge and a demo on the skew by Rich Connelly. Remember, Show and Share does not just have to be finished objects. You can bring in new tools to show off, partially finished projects, disasters, questions, etc., etc., etc. Anything you want to show, share or discuss. This is the meeting for it!

I hope that we all can find some inspiration from the extended discussion on our Show and Share items and the napkin rings. If you haven't had time to make some napkin rings, you still have a week. That gives you plenty of time to try making some of

Jim's designs or to develop your own design. In the past, the members' creativity really shines with these challenge projects. I'm always in awe of the ideas that people come up with for a simple utilitarian object. It will really help to get your creative juices flowing.

Since the tool overview this month will be on the skew, bring in your skews so they can be used as part of the discussion. If you have any questions on how to grind and hone them, there will be members around that can help answer your questions on the tool.

Please remember to mark your calendars for Friday night's RWS lecture by Alan Lacer. Alan is a world class demonstrator on the skew and very active in the woodturning community. I'm sure his lecture will be very interesting to all woodturners. Since there is a pre-meeting display of work, let's have everyone bring their latest creations as well as all the napkin rings everyone made. Since RWS brought in two woodturners this season, let's have a great turnout and show off our work.

From the Chair (cont'd)

Enclosed with this newsletter is the announcement for a raffle for a lathe and a complete set of tools that have been donated to RWS. This is a great opportunity for you to win lots of quality tools. Please support the raffle as the proceeds will be used to update the RWS library. Connie Gates, the RWS Librarian told me that she wants RWS to purchase several woodturning DVDs and books. So take a chance for the raffle and even if you don't win the lathe and tools, you still win because you will benefit from having the latest materials in the RWS library.

The March meeting will be on making jewelry. We have one or two demonstrators lined up, however, we could use some more. If you have the ability to demonstrate how to make any kind of wooden jewelry, please let me know ASAP so we can plan the agenda at our next BOD meeting.

Now go have some fun making some chips at your lathes!

Jim

Lecture and Demonstration to Optimist Group by Jim Hotaling

On February 6, 2009, Jim Hotaling used FLWT's mini lathe to give a lecture and demonstration to the Optimist Group at First Presbyterian Church of Pittsford on wood turning. Jim gave a demo on turning napkin rings followed by his passing around various wood objects that he had turned. The cowboy hats seemed to be the item of most interest to the group of seniors!

The mini lathe is available to all members who wish to do a demo for community and educational groups.

Contact Jim for details - 223-4877



Jim gives lecture / demonstration for Optimist Group

Regional & National Woodturning Events of Interest

2008 - 09		Event	For More Information
Feb	17	Sorby tool demonstration & sale at Pembroke High School, Routes 5 & 77, Corfu, NY 14036, 7:00 - 9:00 PM, (doors open at 6:00 PM), sponsored by Rockler Woodworking, Buffalo	Call Rockler in Buffalo at (716) 631-8922
Feb	20 - 21	Alan Lacer: "Befriending the Skew"	www.rochesterwoodworkers.org/events.htm
Mar	28 - 29	Adirondack Woodturners Association Totally Turning 2009, Saratoga Hilton, Saratoga Springs, NY. Featured demonstrators include: Jimmy Clewes, Rolly Monroe, Michael Mocho, Molly Winton & Others. Instant gallery & vendor's area.	www.totallyturning.com/
May	23	The Sixth New England Woodturning Symposium, Pinkerton Academy, Derry, NH. Featured Demonstrators include: Allan Lacer, Al Stirt, Beth Ireland, Bob Rosand, Peter Bloch, Linda VanGethuchten, Mark St. Leger, JoHannes Michelson plus 14 others.	Bob DeAngelis 470 Newmarket Road Warner, NH 03278 603-456-6242 rdeangelis@tds.net
Jun	26 - 28	2009 Annual AAW Symposium, Albuquerque, NM	http://www.woodturner.org/sym/sym2009/

RWS & FLWT 2009 Calendar of Events

Date	Event	Location	Business	Show & Share	Challenge	Demo	Tool Review	
Feb	11	RWS BOD Mtg	CP Roch	6:00-9:00				
	19	FLWT Mtg	CP Roch	6:30-7:00	7:00-7:45	Napkin Rings 7:45-8:15	None	The Skew Rich Connelly 8:15-9:00
	20	RWS Mtg	SJF	7:00-9:00	Alan Lacer	The Skew		
	24	FLWT BOD Mtg	CP Roch	7:00-9:30				
Mar	11	RWS BOD Mtg	CP Roch	6:00-9:00				
	19	FLWT Mtg	CP Roch	6:30-7:00	7:00-7:30	None Bring Tops	Jewelry Several Demos 7:30-8:30	Texturing Tools TBD 8:30-9:00
	20	RWS Mtg	SJF	7:00-9:00	John Dodd	Design inspiration		
	24	FLWT BOD Mtg	TBD	7:00-9:30				
Apr	8	RWS BOD Mtg	CP Roch	6:00-9:00				
	16	FLWT Mtg	CP Roch	6:30-7:00	7:00-7:45	Jewelry 7:45-8:30	None	Scrapers TBD 8:30-9:00
	17	RWS Meeting	SJF	7:00 – 9:00	Scott Grove	Unconventional methods to furniture making		
	21	FLWT BOD Mtg	TBD	7:00-9:30				
May	13	RWS BOD Mtg	CP Roch	6:00-9:00				
	21	FLWT Mtg	CP Roch	6:30-7:00	7:00-7:30	None Bring Tops	“Banana” Bowl Jeffery Cheramie 7:30-8:30	Bowl Gouge TBD 8:30-9:00
	26	FLWT BOD Mtg	TBD	7:00-9:30				
Jun-Aug	Summer Break							
Sep	17	FLWT Mtg	CP Roch	6:30-7:00	7:00-7:45	“Banana” Bowls 7:45-8:30	TBD	TBD

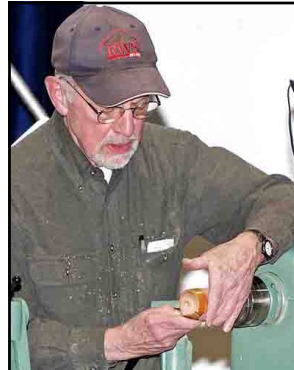
Jan Demonstration: Napkin Rings by Jim Hotaling

Jan Tool Review: The Parting Tool by Ward Donahue

Summary by Kevin Hart Photos by Dave Smith

The start of a new year brought a new format for FLWT meetings. Each meeting will feature a demonstration on a particular tool, while every other meeting will include a demonstration of the next month's challenge project.

Jim Hotaling showed us how to make napkin rings, the challenge project for February. As always, Jim came loaded with all sorts of information, including the fact that the holes in napkin rings are 1 1/4 inches in diameter.



< Jim demonstrates making a napkin ring (shown above)



Jim brought along a sampling of the napkin rings he's made

Once that hole is drilled in the blank and the corners are taken off at the band saw, the blank is mounted on a mandrel, for which Jim provided detailed plans in his handout. Some other napkin ring tips:

- The rings can be turned either as face turnings or end grain turnings
- Use washers of various sizes to size the outside diameter of the ring after drilling the hole
- Napkin rings rarely sell for more than \$20 for 4, making it tough to make money on them.

Be sure to bring your napkin rings to the February meeting!

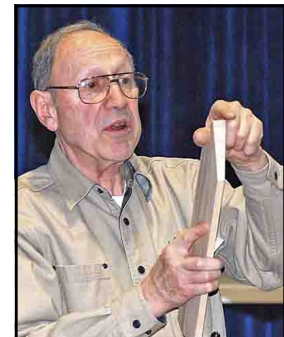
Following Jim's demonstration, Ward Donahue reviewed the parting tool. Ward covered sharpening, safety, and uses of the tool. The two bevels should meet at about a 25 degree angle, and the edge should be square across. The most important point in safely using the tool is to keep a kerf wider than the tool to prevent binding and the tool being thrown back at the user. Although many of us may consider the parting tool to be a humble and limited use tool, Ward pointed to its many uses, including:

- Cutting off finished pieces
- Making tenons to fit into chucks
- Sizing spindles at locations along their length
- Making beads

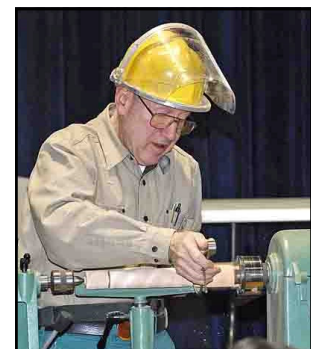
Please let any board member know if you like (or don't like) the new format. We have already made some improvements based on member suggestions.



Ward demonstrates how to lay out a spindle



Ward uses calipers and a parting tool to bring the spindle diameter to dimension at locations along its length



Treasurers Report by Kevin Hart
 Period 1/1/09 - 1/31/09

<u>Financial Summary</u>	
Beginning Balance	\$4,965.82
Total Income	\$66.00
Total Expenses	(\$413.45)
Closing Balance	\$4,618.37
<u>Income / Expense Statement</u>	
Income	Expenses
50 - 50	\$31.00 Show & Share (\$10.00)
Member's dues	\$35.00 Christmas party (\$248.41)
	Newsletter printing / postage (\$50.75)
	Notebooks (\$104.29)
Total Income	\$66.00 Total Expenses (\$413.45)

FLWT / RWS Activity Committee Captains, 08 - 09 Season

FLWT Committee	Captain	Telephone	Cell	Email
Camera/Video/Audio	Dave Schafer	328-0703		deadeyekcb@yahoo.com
Presenter Equipment Set-up	Marty Chatt	533-1189		mchatt8@aol.com
Chairs and Display Table Take Down	Doug Crittenden	924-5903		cleo99@frontiernet.net
Meeting Greeter	Mike Hachey	723-1395		hacheymd@aol.com
Cleanup	Shirley Robbins	(315) 573-7228		srobbins002@rochester.rr.com
Tops for Strong	Cliff Weatherell	737-7815		canoeboy@rochester.rr.com
Lathe Carts (General & Mini)	Harry Stanton	(315) 986-1548		harry_c_stanton@yahoo.com
Youth Outreach	Jerry Sheridan	494-1889		cgs1122@hotmail.com
Marketing	Dale Osborne	(315) 524-7212		dosborn3@rochester.rr.com
Social	Jim Gilson	509-3704		gilson1@frontiernet.net
Program Committee	Jim Gilson	509-3704		gilson1@frontiernet.net
Newsletter Articles				
Member Surveys	Lee Spencer	(315) 597-8941		lspencer@isaacheating.com
RWS Speaker Committee	Al Scheg	352-0884	301-5713	scheg@rochester.rr.com
RWS SIG Liaison	Mike Hachey	723-1395		hacheymd@aol.com

Turning Tips

Fine Woodworking.com is offering an on-line reference of articles and videos which cover a variety of topics including many related to woodturning. You can try out the service for 2 weeks for free, after which it's \$14.95 per year. Membership provides you with access to 1,400 searchable articles, 350+ videos and quite a bit more.

I found 144 articles and videos related to woodturning. A few examples include:

- Video - Wood Turning 101: Primer on Gouges by Mike Mahoney. Why are there so many different gouges?
- Video - Turning Beads With a Skew Chisel with Richard Raffan. Practice turning beads in this exercise excerpted from the DVD "Turning Wood."
- Article - Tips for Hollowing End Grain by Alan Lacer
- Video - How to Turn Difficult Grain by Mike Mahoney. Lay down wayward grain using a traditionally-ground gouge.
- Video - Highlights from a Major Exhibition of New Woodturning with David Heim.

Some authors' / demonstrators' names you'll probably recognize include Richard Raffan, Mike Mahoney, Ernie Conover, Alan Lacer, Mike Darlow, Rude Oslonik, Bob Stocksdale, and Peter Child.

I've spent enough time checking out this reference series to recommend it. Besides, you can try it out for free for a couple of weeks before you have to commit to spending the \$14.95. For more information, go to the web site below and click near the top right where it says "14 day free trial - Become a member today."

<http://www.taunton.com/finewoodworking/>

Submitted by Dave Smith

The Woodworkers Source web site offers a great on-line reference showing photos of thousands of different woods and listing various wood characteristics. The web site also has a wood selector where you can input characteristics you're looking for such as hardness, color, open or closed grain, and wood figure. Woodworkers Source sells a huge variety of different woods, many pieces dimensioned for turners, e.g., turning squares and bowl / platter blanks. For more information, go to:

<http://www.woodworkerssource.com/>

Submitted by Dave Smith

Classified Ads

For Sale

- Jet 1442VS Lathe (Variable pulley model). \$450, including cast iron legs. (Currently selling new for over \$1000, plus shipping.) Contact Kevin Hart, at kevinhart@gmail.com or 442-5789.



Woodturning Limerick By the FLWT Laureate

A turner by name of Sir Drizzell
Was learning to use a wood chisel
With the bevel not rubbing
His head needed scrubbing
'Cause his chisel behaved like a missile

Mentor Contacts¹

Name	Day Tel	Eve Tel	Email	Turning Skills / Specialty
Doug Crittenden	924-5903	924-5903	cleo99@frontiernet.net	General
Ed DeMay	406-6111	924-5265	edemay@rochester.rr.com	Bowl turning, dust collection
Ward Donahue	334-3178	334-3178	wddonah@frontiernet.net	Spindle & hollow turning, coring, sharpening
Jim Echter	377-9389	377-9389	jechter@rochester.rr.com	Spindle & faceplate turning, sharpening
Jim Hotaling	223-4877	223-4877	jhotaling2198@aol.com	Christmas ornaments
Ed Lehman	637-3525		elijw@rochester.rr.com	General turning
Ralph Mosher	359-0986	359-0986	2rmosher@rochester.rr.com	Faceplate turning, bowls
Dale Osborne	(315) 524-7212	(315) 524-7212	dborn3@rochester.rr.com	General turning
Tom Pedlow		237-3962		General turning
Shirley Robbins	(315) 945-3363	(315) 573-7228	srobbins002@yahoo.com	Inside out decorations
Lou Stahlman	248-2097	248-2097	lstahlman@rochester.rr.com	How to cut wood
Erwin A. Tschanz	271-5263 (Dec – Mar)	271-5263 (Dec – Mar)		Historical, bowls, plates, goblets, boxes, bone, antler
Bill Tschorke	865-1971	865-1971		General turning

1. **Here's a great way for you to improve your turning skills.** FLWT has award winning and expert turners who, at no cost, are willing to share their expertise one-to-one with other club members. A mentoring relationship might be as simple as getting a mentor's advice in a one time conversation. Or, it might include regular hands-on sessions over a lathe. The exact nature is up to you and your mentor. If you feel you could benefit from mentoring, organize your thoughts about your needs and contact an appropriate volunteer mentor above to determine if he or she is a match and available.

FLWT Board of Directors 2008—2009

Position	Name	Day Tel	Eve Tel	Email
Chair	Jim Echter		377-4838	jechter@rochester.rr.com
Vice-Chair	Ed DeMay	406-6111	924-5265	edemay@rochester.rr.com
Treasurer	Kevin Hart	442-5789	442-5789	kdhart@rochester.rr.com
Secretary & Newsletter Editor	Dave Smith	244-1535	244-1535	dsmith43rochester.rr.com
Tool Librarian	Jim Hotaling	223-4877	223-4977	jhotal2198@aol.com
Advisors	Rich Connelly	889-4996	889-4996	rconnell@rochester.rr.com
	Bill Costanzo	865-3866	865-3866	adsdad@rochester.rr.com
	Ward Donahue	334-3178	334-3178	wddonah@frontiernet.net
	David Schafer	328-0703		deadeyekcb@yahoo.com
	Jim Hotaling	223-4877	223-4877	jhotal2198@aol.com
	Jerry Sheridan	738-4159	494-1889	cgs1122@hotmail.com

Show and Share

Photos by Dave Smith



Kevin Hart



Bruce Trojan



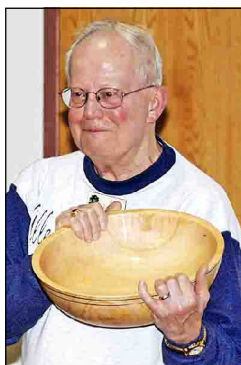
Harry Beaver



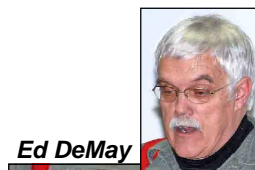
Erv Tschanz



Harry Stanton



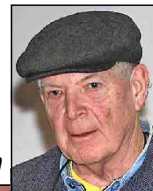
Ed Lehman



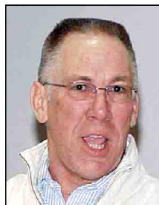
Ed DeMay



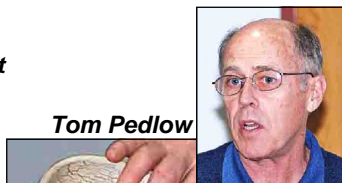
Bob Alhart



Jim Gilson



Jerry Sheridan



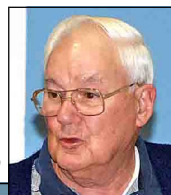
Tom Pedlow



Rich Connelly



Dave Gould



Jerry McCracken



Wally Ballard

