



Finger Lakes Woodturners

A Special Interest Group of the
Rochester Woodworkers Society
and a Chapter of

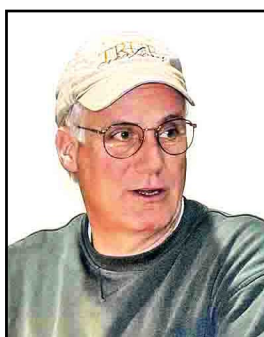
The American Association of Woodturners



Pg	Contents
1	• From the Chair
2	• Regional & National Woodturning Events of Interest
3	• February Challenge: Napkin Rings • RWS & FLWT 2009 Calendar of Events
4	• Tool Demonstration: The Skew, presented by Rich Connelly
5	• Treasurer's Report • FLWT Activity Committee Captains, 2008 - 2009 Season
6	• Turning Tips • Classified Ads • Robust Lathe Test Drive Offer
7	• Mentor Contacts • FLWT Board of Directors
8 & 9	• Photos From Feb 09 Meeting's Show & Share

FLWT meetings are held from 6:30 to 9:00 PM on the 3rd Thursday of each month at Al Sigi CP Rochester, 3399 Winton Road South in Henrietta.

From the Chair by Jim Echter



What an action packed meeting we had in February! The Show & Share discussion was very inspirational. It may have gone on for a little too long at the expense of members showing their Challenge Projects but the dialog was so

good that I had to give it more time than scheduled. I also want to thank Rich Connelly for the fantastic demonstration he gave on how to use the skew. Even though it was his first demo to the group, no one would have known it since he was so well prepared and knowledgeable about the subject matter. It was also a wonderful introduction to the tool for anyone that attended the Alan Lacer work-

shop. Two "skews up" for you Rich!

As I wrote a couple of months ago, the FLWT Board of Directors and Advisors are trying to balance our meeting agendas to try to please everyone. Yes, we know we won't ever please everyone all the time and some we may never please. That's just the reality for any large group of people that come together with a common interest. However, we will continue trying to tweak the agendas to provide the most value for the most members. We just ask that all the members look at the program on an annual basis and not a monthly or hourly basis. If you made some new friends, learned a new technique, got inspired, attended a workshop, or participated on a committee, you likely obtained high value from the FLWT organization - which is our primary goal. Since we're tweaking the meeting agendas, please feel free to let any board members or advisors know your thoughts regarding particular programs - both what you liked as well as your constructive criticisms. That way, we can take your input into account at future planning meetings.

From the Chair (cont'd)

We want to try something new for the March meeting. **Now please pay attention...** The doors will open at 6:00 pm for a Pre-Meeting Display. This will be in place of the usual Show and Share. The first few folks that arrive, please set up 3-4 tables along the back wall of the gym. If you have a piece of work that you want to share with the group, put it on one of the tables for display. Jerry Sheridan is putting together a simple info sheet for you to fill out that includes your name, the wood type, the finish, etc. The Pre Meeting Display and Social 3/4 Hour will run from 6:00 to 6:45 pm. This will be members' only time to display, look at and discuss the pieces they brought to the meeting. We will then have a brief business meeting starting at 6:45 and then right on to the demos. We're trying this because we have an action packed schedule for this month's meeting and we want to make sure all the demonstrators have enough time for their demos and don't feel rushed.

The March meeting demos will be on making jewelry. Jerry McCracken will demonstrate some of the necklaces and earrings he has made. I will demonstrate how to make finger rings. Mike Axelrod is going to discuss jewelry findings which are all the little bits and pieces you need to really make jewelry. We'll wrap up with a demo by Jon Rouleau on his new EZ rough out tool for bowls. The chips will be a flyin'!

April's meeting will be on embellishing tools (texturing tools, etc.) and scrapers. Let me know ASAP if you can demonstrate a special tool that you own or technique that you use. We hope to get 8 - 10 mini demos on the schedule. If we coordinate the demos, then maybe we can use the same bowl blank and spindles to keep the program moving quickly.

Keep your bevels rubbin' and we'll see you at the March meeting.

Jim

Regional & National Woodturning Events of Interest

2009		Event	For More Information
Mar	28 - 29	Adirondack Woodturners Association Totally Turning 2009, Saratoga Hilton, Saratoga Springs, NY. Featured demonstrators include: Jimmy Clewes, Rolly Monroe, Michael Mocho, Molly Winton & Others. Instant gallery & vendor's area.	www.totallyturning.com/
Apr	26	Woodturning Demonstration by Keith Tompkins, sponsored by Pembroke Woodturners Guild & WNY Woodturner's1. Door & raffle prizes, 50/50 drawing. Pembroke High School Auditorium, Routes 77 & 5, Corfu, NY 14036. Fee is \$20.00 per person, lunch available on site. Includes discussion of design and application of the golden rectangle.	Jim Ripracht at j&lfeed@hotmail.com or Steve Imerese at saiwoodturner@yahoo.com
May	23	The Sixth New England Woodturning Symposium, Pinkerton Academy, Derry, NH. Featured Demonstrators include: Allan Lacer, Al Stirt, Beth Ireland, Bob Rosand, Peter Bloch, Linda VanGethuchten, Mark St. Leger, JoHannes Michelson plus 14 others.	Bob DeAngelis 470 Newmarket Road Warner, NH 03278 603-456-6242 rdeangelis@tds.net
Jun	26 - 28	2009 Annual AAW Symposium, Albuquerque, NM	http://www.woodturner.org/sym/sym2009/

February Challenge: Napkin Rings

Photos by Dave Smith



FLWT's talented woodturners brought in dozens of napkin rings for our February Challenge Project. Members rising to the challenge included: David Gould, Lee Spencer, Debbie Hachey, Lou Stahlman, Bill Tschorke, Jim Echter, Tom Mooney, Jim Duffy, Jerry Sheridan, Bob Alwardt, Jerry McCracken, Jim Hotaling, Gary Russell, Ed Lehman, Harry Beaver, and Chuck Fox.

RWS & FLWT 2009 Calendar of Events

Date	Event	Location	Business	Show & Share	Challenge	Demo	Tool Review
Mar	11	RWS BOD Mtg	CP Roch	6:00 - 9:00			
	19	FLWT Mtg	CP Roch	6:30 - 7:00	7:00-7:30	None Bring Tops	Jewelry Demos 7:30-8:30 Texturing Tools TBD 8:30-9:00
	20	RWS Mtg	SJF	7:00 - 9:00	John Dodd	Design inspiration	
	24	FLWT BOD Mtg	TBD	7:00 - 9:30			
Apr	8	RWS BOD Mtg	CP Roch	6:00 - 9:00			
	16	FLWT Mtg	CP Roch	6:30 - 7:00	7:00-7:45	Jewelry 7:45-8:30	None Scrapers TBD 8:30-9:00
	17	RWS Meeting	SJF	7:00 - 9:00	Scott Grove	Unconventional methods to furniture making	
	21	FLWT BOD Mtg	TBD	7:00 - 9:30			
May	13	RWS BOD Mtg	CP Roch	6:00 - 9:00			
	21	FLWT Mtg	CP Roch	6:30 - 7:00	7:00-7:30	None Bring Tops	Banana Bowl Jeffery Cheramie 7:30-8:30 Bowl Gouge TBD 8:30-9:00
	26	FLWT BOD Mtg	TBD	7:00 - 9:30			
Jun-Aug	Break						
Sep	17	FLWT Mtg	CP Roch	6:30 - 7:00	7:00-7:45	Banana Bowls 7:45-8:30	TBD TBD

Tool Demonstration: The Skew

Presented by Rich Connelly

Summary by Kevin Hart

Photos by Dave Smith



Our series of monthly “Tool Talks” continued in February, with Rich Connelly demystifying the tool so many of us fear, the skew. Rich covered sharpening the skew, explaining that the bevel should be about 1.5 to 2 times the thickness of the tool. After the bevel has been ground, the skew should be honed frequently before returning to the grinder. Small diamond hones or stones accomplish this.

Rich also pointed out that a skew’s performance can be improved by rounding the tool’s long edges. Some skews come with their edges already rounded but many come with relatively sharp edges, making it difficult to move them smoothly along the tool rest.



As for cutting, Rich showed that it’s important to use the “toes” of the skew. The short toe can be effectively used to rough out square stock, as well

as to roll beads. As Rich showed, it is also possible to use the short toe to make shallow cove cuts.

The “long” toe is effective in making V cuts, with an arching motion, coming in from both sides of the V. The long point can also be used to part off, basically by extending a V cut.

Rich demonstrated the skew’s versatility, making peeling cuts with the skew laid flat on the tool rest.

The skew has never been my best friend. But after Rich’s demo, I was inspired to spend some time on my lathe with some scrap pine, with the result that I’m now considerably more at ease with the skew.



Woodturning Limerick By the FLWT Laureate

There was a woodturner named Jack
Who turned a piece with a crack
When it got to full speed
In his pants he had peed
Cause the darned thing gave him a whack!

Treasurers Report by Kevin Hart
 Period 2/1/09 - 2/28/09

Financial Summary	
Beginning Balance	\$4,618.37
Total Income	\$92.00
Total Expenses	(\$91.30)
Closing Balance	\$4,619.07

Income / Expense Statement			
Income		Expenses	
50 - 50	\$27.00	Show & Share	(\$20.00)
Member's dues	\$65.00	Demonstrator	(\$40.00)
		Name tags	(\$31.30)
Total Income	\$92.00	Total Expenses	(\$91.30)

FLWT / RWS Activity Committee Captains, 08 - 09 Season

FLWT Committee	Captain	Telephone	Cell	Email
Camera/Video/Audio	Dave Schafer	328-0703		deadeyekcb@yahoo.com
Presenter Equipment Set-up	Marty Chatt	533-1189		mchatt8@aol.com
Chairs and Display Table Take Down	Doug Crittenden	924-5903		cleo99@frontiernet.net
Meeting Greeter	Mike Hachey	723-1395		hacheymd@aol.com
Cleanup	Shirley Robbins	(315) 573-7228		srobbins002@rochester.rr.com
Tops for Strong	Cliff Weatherell	737-7815		canoeboy@rochester.rr.com
Lathe Carts (General & Mini)	Harry Stanton	(315) 986-1548		harry_c_stanton@yahoo.com
Youth Outreach	Jerry Sheridan	494-1889		cgs1122@hotmail.com
Marketing	Dale Osborne	(315) 524-7212		dosborn3@rochester.rr.com
Social	Jim Gilson	509-3704		gilson1@frontiernet.net
Program Committee	Jim Gilson	509-3704		gilson1@frontiernet.net
Newsletter Articles				
Member Surveys	Lee Spencer	(315) 597-8941		lspencer@isaacheating.com
RWS Speaker Committee	Al Scheg	352-0884	301-5713	scheg@rochester.rr.com
RWS SIG Liaison	Mike Hachey	723-1395		hacheymd@aol.com

Turning Tips by Jon Rouleau

I passed around the EZ Rougher at our February meeting. Its carbide insert cutter has four sides and is estimated to stay sharp for six to eight bowls before needing replacement. My tool, the C1, has an R4 cutter that comes with the tool, as well as a maple handle. The tool and handle cost approximately \$124 and separate carbide cutters are \$13 each.

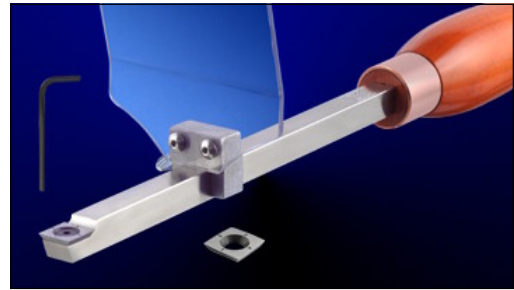


Image from www.easywoodtools.com

I have spoken with the manufacturer / owner who is willing to offer a special deal to RWS & FLWT members. He will let us order the David Marks Signature model (it comes standard with a 20 inch Bubinga handle and an R4 cutter) and one R2 cutter for a total cost of \$139. The difference between the price on the Signature model deal and the C1, with the maple handle and one extra carbide cutter, is only \$2. Also, if we can bundle an order for 8 tools, the owner will provide free shipping. Otherwise, shipping is around \$9 for each tool.

The website, www.easywoodtools.com, has information about the tool and videos of the tool in action. If you want to place an order, be sure to ask for the special deal on the David Marks tool and mention my or the RWS name. I hope to demonstrate the tool at the March meeting.

If you have further questions, feel free to contact me at: jonrouleau@yahoo.com or at 243-4550.

Classified Ads

For Sale

- My daughter has a huge maple burl that she would like to sell. She lives near Mexico /Parish, NY, outside of Syracuse. The tree is down and the burl is ready to go. If anyone has interest, please contact Marlene L. Watson at LWAT-SON5@twcny.rr.com

Robust Lathe Test Drive Offer by Al Scheg

I've had numerous requests to 'test-drive' my lathe and I'd like to extend that offer to all FLWT members. My lathe is the **Robust American Beauty** with all the bells and whistles including a 25" swing, sliding headstock, tilt-away tailstock, SS ways. Best of all, it's manufactured in the **USA!** While a video clip is available on Robust's website, having a go at it in person - with gouge in hand - can't be beat. You can contact me at the March19 SIG meeting or as shown below.

scheg@rochester.rr.com <<mailto:scheg@rochester.rr.com>>

352-0884 (home)

301-5713 (cell)

Mentor Contacts¹

Name	Day Tel	Eve Tel	Email	Turning Skills / Specialty
Doug Crittenden	924-5903	924-5903	cleo99@frontiernet.net	General
Ed DeMay	406-6111	924-5265	edemay@rochester.rr.com	Bowl turning, dust collection
Ward Donahue	334-3178	334-3178	wddonah@frontiernet.net	Spindle & hollow turning, coring, sharpening
Jim Echter	377-9389	377-9389	jechter@rochester.rr.com	Spindle & faceplate turning, sharpening
Jim Hotaling	223-4877	223-4877	jhotaling2198@aol.com	Christmas ornaments
Ed Lehman	637-3525		elijw@rochester.rr.com	General turning
Ralph Mosher	359-0986	359-0986	2rmosher@rochester.rr.com	Faceplate turning, bowls
Dale Osborne	(315) 524-7212	(315) 524-7212	dborn3@rochester.rr.com	General turning
Tom Pedlow		237-3962		General turning
Shirley Robbins	(315) 945-3363	(315) 573-7228	srobbins002@yahoo.com	Inside out decorations
Lou Stahlman	248-2097	248-2097	lstahlman@rochester.rr.com	How to cut wood
Erwin A. Tschanz	271-5263 (Dec – Mar)	271-5263 (Dec – Mar)		Historical, bowls, plates, goblets, boxes, bone, antler
Bill Tschorke	865-1971	865-1971		General turning

1. **Here's a great way for you to improve your turning skills.** FLWT has award winning and expert turners who, at no cost, are willing to share their expertise one-to-one with other club members. A mentoring relationship might be as simple as getting a mentor's advice in a one time conversation. Or, it might include regular hands-on sessions over a lathe. The exact nature is up to you and your mentor. If you feel you could benefit from mentoring, organize your thoughts about your needs and contact an appropriate volunteer mentor above to determine if he or she is a match and available.

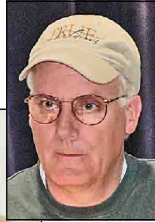
FLWT Board of Directors 2008—2009

Position	Name	Day Tel	Eve Tel	Email
Chair	Jim Echter		377-4838	jechter@rochester.rr.com
Vice-Chair	Ed DeMay	406-6111	924-5265	edemay@rochester.rr.com
Treasurer	Kevin Hart	442-5789	442-5789	kdhart@rochester.rr.com
Secretary & Newsletter Editor	Dave Smith	244-1535	244-1535	dsmith43rochester.rr.com
Tool Librarian	Jim Hotaling	223-4877	223-4977	jhotal2198@aol.com
Advisors	Rich Connelly	889-4996	889-4996	rconnell@rochester.rr.com
	Bill Costanzo	865-3866	865-3866	adsdad@rochester.rr.com
	Ward Donahue	334-3178	334-3178	wddonah@frontiernet.net
	David Schafer	328-0703		deadeyekcb@yahoo.com
	Jim Hotaling	223-4877	223-4877	jhotal2198@aol.com
	Jerry Sheridan	738-4159	494-1889	cgs1122@hotmail.com

Show and Share

Photos by Dave Smith

Jim Echter



Mike Axelrod



Gary Russell



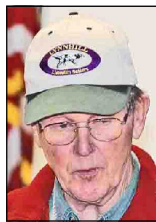
Ed Lehman



Bruce Trojan



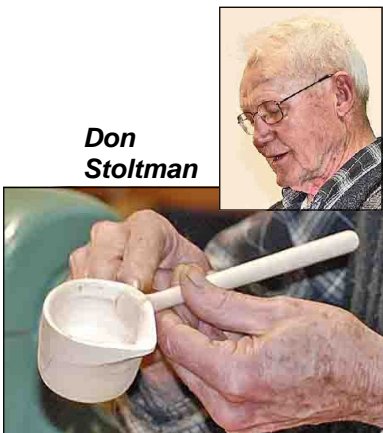
Dale Osborne



Jim Hotaling



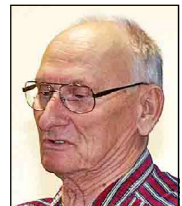
Don Stoltman



Harry Beaver

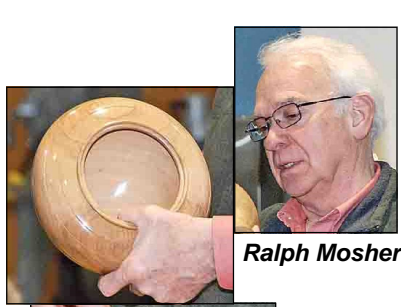


Bob Alwardt

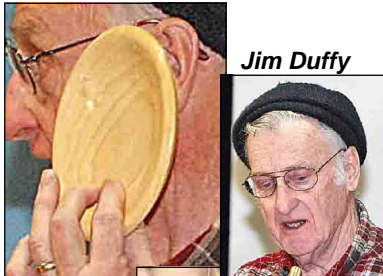


Show and Share (cont'd)

Photos by Dave Smith



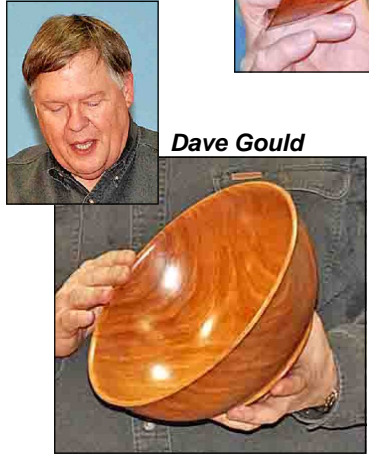
Ralph Mosher



Jim Duffy



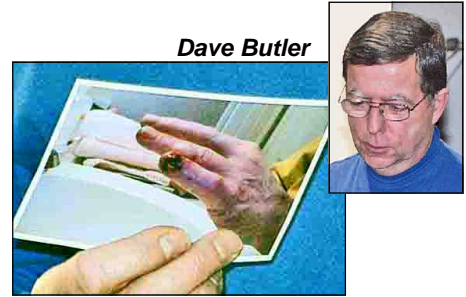
Jeff Adams



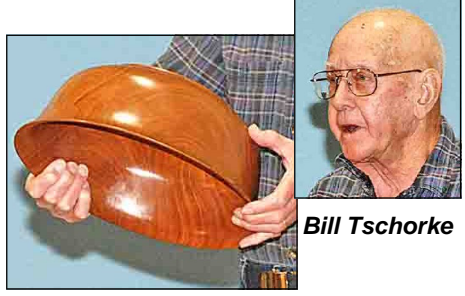
Dave Gould



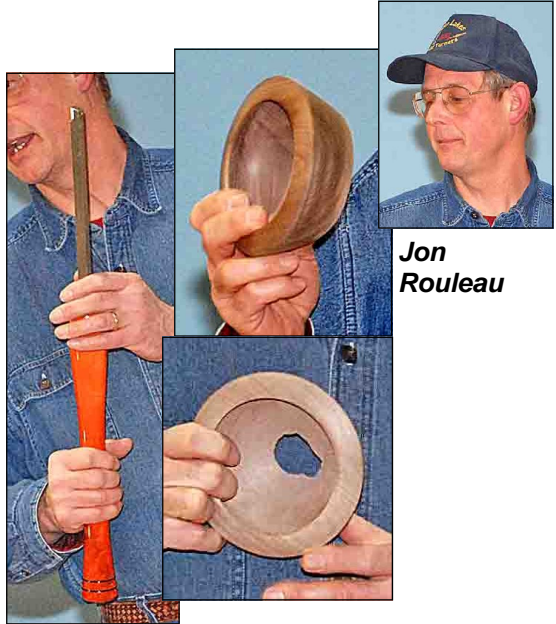
Lee Spencer



Dave Butler



Bill Tschorke



Jon Rouleau



Dave Smith