



Finger Lakes Woodturners

A Chapter of The American Association of Woodturners



From The Chair – October 2013



Mark Mazzo
FLWT President

From The Chair – October 2013
We kicked off our season with a bang last month by hosting International turner, Liam O'Neill. From all accounts, the Friday meeting, Saturday demonstration and Sunday hands-on workshop were a rousing success. Thank you to everyone who participated in the event! I'd also like to extend a special thank you to

Jeffrey Cheramie and Ralph for helping to gather wood for the event, to Ed DeMay for hosting Liam O'Neill and to Jim Echter for allowing the use of his shop for the hands-on workshop.

This month we have our very own Jim Echter doing a lecture and demonstration on Production Turning. This takes us back to the roots of woodturning where craftsmen would work on creating many functional items in a very efficient manner at the lathe. Jim runs a production turning business and he has a tremendous amount of experience to share with us on this subject. This should be a great night of information and learning for us all on a topic that is not often covered. Make sure you attend!

Our season is off to a strong start. Let's keep the momentum going with continued strong participation in events throughout the year. I hope to see everyone at our next event.

Until then, keep turning and keep learning!
--Mark

FLWT meetings are held from 6:45 to 9:00 PM (pre-meeting Show and Share starts at 6:00 PM) on the 3rd Thursday of the month each month. Our meetings are held at the Isaac Heating and Air Conditioning University classroom, 180 Charlotte St, Rochester, 14607. For more information, go to <http://fingerlakeswoodturners.com/>.

Pg	Contents
1	• From the Chair by Mark Mazzo
2	• Show and Share
4	• Jim Hotaling • Gerry Sheridan
5	• Liam O'Neill Saturday Workshop
8	• Liam O'Neill Sunday Workshop
10	• Events of Interest • Mentor Contacts
11	• ISAAC Ad • Rockler Season Sponsor • FLWT Board of Directors

Here's a look at the rest of our season:

- October: Jim Echter – Production Turning
- November: Brian Effinger – Turn a Birdhouse Ornament
- December: Dave Gould – Thread Chasing for Boxes & Hollow Forms
- January: Bill McColgin – Turning Crotch Wood for Figure
- February: Gary Russell – Turn a Bowl
- March: Bob Rosand – National Speaker (Friday night meeting, Saturday demo) see www.rrosand.com
- April: Ralph Mosher – Turning a Goblet
- May: Jeffery Cheramie – Spirals

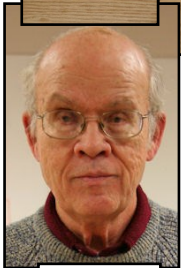
As you can see, we have a great planned. I look forward to our future meetings and all of the great and interesting turning topics we will cover.

Until our next meeting, keep turning and keep learning!

Members Show and Share



**Marty
Chatt**



**Erwin
Tschanz**



**Jim
Hotaling**



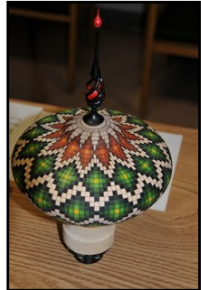
**Sam
Tischler**



**Jerry
Sheridan**



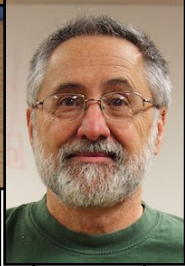
**Albert
Filo**



Bruce



Members Show and Share (con't)



**Gary
Russell**



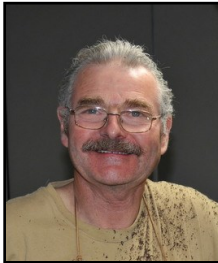
**Ed
Lehman**



**Harry
Beaver**



**David
Seward**



**Liam
O'Neil**



**Ralph
Mosher**



**Dale
Nish**



From the Desk of Jim Hotaling



RACCOON CARVING

After joining the Genesee Wood Carvers a year ago, I attended several of their in house carving classes. One of their senior members, Rex McHail, asked me if I wanted to attend a raccoon carving session being given by Debbie Edwards from Miami, Ok.. The cost for the three day carving class was \$230. and would include breakfast and lunch. I signed up and never regretted it. I found Debbie to be very patient with me as I was a newcomer to carving. Most of the class completed their carving in addition to painting the raccoon. I still have work to do!!

It is That Time Of Year

As we head towards December, you might remember that in the past several years, FLWT has turned tops for the Golisano Children's Hospital and the Hillside Children's Foundation. Last year we turned 250 tops. I would like to suggest that we try to do the same. Turning tops is a good way to practice tool control. If you are new to turning, give me a call and I can put you in touch with one of the experienced top turners. Gary Russell has already given me three tops, which I might add are out standing - way to go Gary!

Liam O'Neill Saturday Workshop

Notes by Jerry Sheridan

Liam points out that he teaches technique, tools, and tool technique. This suited me very well. I was actually more interested in the above rather than the project itself.



Salad Bowl

When he is roughing the outside, he goes bottom to top. He rolls the gouge from one side to the other. I believe he was using a standard bowl gouge

here.

For a shearing cut on the outside, he was using a standard bowl gouge, upside down.

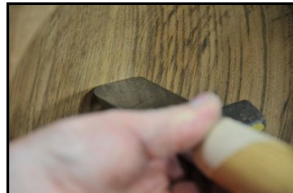


side curve.

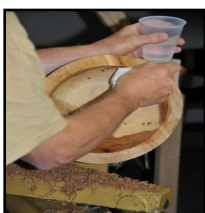


Finishing cuts- Bevel should rub lightly. Go slow. Keep tool pressure down on the tool rest, not on the wood.

Liam likes wide rims on his salad bowl- better shows off the bowl.



He wants a flowing inside curve. He does not feel that the inside curve has to match the out-



When scraping the inside of a bowl, the closer the profile of the scraper to the profile of the bowl, the better the results. Scrape at center, handle up.

Using a semi-soft pad on his disc, he typically starts at 80 grit, goes to 120 and then to

180.



Salad bowl finish- He uses a mineral oil. He will knock this down with 220 grit to possibly 320. Between coats of mineral oil, he will apply a coat of shellac based sanding sealer. This keeps the wood from drying

Liam O'Niell Saturday Workshop (con't)

When watching Liam through his demo, I noticed how he will make several back and forth no-cutting passes to line up his cut.



CROOKED GRAIN CONTAINER



When forming a tenon to fit into a scroll chuck, round the bottom corner off slightly so that dust and shavings will not push on the piece and possibly throw it off.

Have the profile of the tenon properly sized to utilize the maximum grip of the scroll chuck.

When selecting the top and bottom of this piece, select the end with the most character for the top.

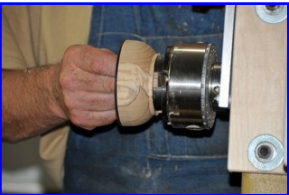


One of his parting tools has a groove ground on the face, giving you 2 cutting points. Sharpen the non-grooved edge. Cut with the groove down

He hollows this small vessel with the Irish grind detail gouge.



Tear out- He often rubs in thin CA glue to get better cut.



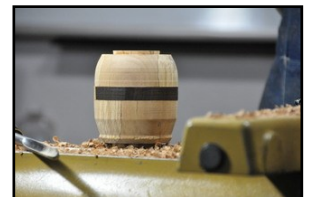
Finish on small vessel:
After sanding to 600 Grit



(He likes carborundum paper), he applies EEE Ultra shine, followed by Shella Wax (Packard and Penn State).

Liam utilizes a Bedan Tool to carefully cautious cuts. Check size often.

size the tenon. Use very



Liam O'Niell Saturday Workshop (con't)

Fit the leading edge of the tenon first. If you go too far, you can still make the remainder of the tenon fit.



When reverse chucking these small projects into a scroll chuck, he will use 3 folds of a paper towel to protect the piece. Use very light tension on the project.

*The thing to remember and focus on is that the bevel of the gouge should be pushing the box into the scroll chuck.

TURNING WITH A CHAIN SAW

Liam uses a homemade lathe. A standard lathe is used for demonstration purposes only. The wood blank is turned by hand.



Mounting the blank

Uses a Stihl MSE-220 electric chain saw mounted on fabricated holder.

When doing the outside of the piece, the bar is tilted slightly towards the turner. When hollowing, bar is tilted slightly away from the turner.

When marking a bowl blank for a face plate mount, Liam uses a gouge, giving a larger diameter center marking, making it easier to center the face plate.



Liam O'Niell Saturday Workshop (con't)

Liam's large rim bowl. Using the cuts previously demonstrated.



Grinds on his gouges



Liam O'Niell Sunday Workshop

Everything got off in fine shape after we carried all of the lathes and equipment into Jims Studio (Bilko doors were not designed for ease of access). Laim explained to everyone the projects and proceeded to make the rounds offering advice and tweaking everyone techniques. As the morning progressed Laim was often at the lathe offering his take on each step of the projects. Then it was on to the individual lathes to put these steps into use. When questions were asked it was gather around time and a discussion ensued with Laim making sure each and every part was covered. Lunch again was a time for taking a breather and more discussion and questions. Jim and his wife Kathy graciously provided liquid refreshments through the day. Lots of chips were made in addition to completing the project and a good time was had by all. — Ed DeMay

Liam O'Niell Sunday Workshop (con't)



A CALL FOR HELP- Jerry Sheridan

As most of you know, myself and several others in our club have spent a good deal of time working with the Technology Class at Byron-Bergen Central School. I think it is very evident that our time and energy has been greatly appreciated by both the students and their teacher, Jay Wolcott. I would like to continue this effort again this year.

First of all, I would like to take into the classroom and leave as many sample projects as possible. Jay is pretty open to projects we may introduce to the students. It would even be better if we were able to have some projects that utilize both some turning and some flatwork. However, this is not a prerequisite.

The students are grades 9-12 (Ages 14-17). Generally there is one or 2 girls in each class.

Obviously, the list of possible projects we could leave at the classroom is endless- candle sticks, lamps, toys, ornaments and on and on.

It would be great if you could give this some thought and make a project you would donate to the school.

Secondly and oh so important, we could really use more help in the classroom. The class runs from 9:15 to 10:00am five days a week. We would like to be able to help from March 1st to the end of May. Last year, we were able to have our club's mini lathe in the classroom, but the students were only able to use it on the days when 1 of our members was in the class. There are also 2 old and very abused power matic 45's. I think if you have a chat with Mike Brawley, Dave Ververs, Rich Connelly, Gary Russell or Harry Beaver, they will be happy to share how rewarding these classroom experiences can be. The students take a great deal of pride in their work.

Something interesting to point out is, that as a general rule, our guys have worked as a team, 2 in the classroom at a time. I think one benefit I saw arise from this is that it gave some of our members the opportunity to get to know a fellow turner much better. Car pooling is great. Think about teaming up with another member who may live near you. You will absolutely get to know and appreciate them better. You can also look forward to after class crumpets and tea (I've been watching too many Jimmy Clews videos) at the Bergen Farm Market (a restaurant).

Sounds like I'm asking a lot. I am. I hope you will consider a project for the students and then also consider spending some time in the classroom. I promise you a very rewarding experience.

Local and National Woodturning Events of Interest

Year/Date	Event	For More Information
April 10th-Sept. 22nd 2013	Fuller Craft Museum <i>Across the Grain: Turned and Carved Wood</i> Opening Reception: Sunday, May 19, 2013, 1:00 - 4:00 pm	http://fullercraft.org/event/across-the-grain-turned-and-carved-wood/

Mentor Contacts¹

Name	Day Tel	Eve Tel	Email	Turning Skills / Specialty
Doug Crittenden	924-5903	924-5903	cleo99@frontiernet.net	General turning
Ed DeMay	406-6111	924-5265	edemay@rochester.rr.com	Bowl turning, dust collection
Ward Donahue	334-3178	334-3178	wddonah@frontiernet.net	Spindle & hollow turning, coring, sharpening
Jim Echter	377-9389	377-9389	jechter@rochester.rr.com	Spindle & faceplate turning, sharpening
David Gould	245-1212	245-1212	D2sGould@aol.com	Bowls, plates and hollow-forms
Jim Hotaling	223-4877	223-4877	jhotaling2198@aol.com	Christmas ornaments
Ed Lehman	637-3525		elijw@rochester.rr.com	General turning
Ralph Mosher	359-0986	359-0986	2rmosher@rochester.rr.com	Bowl turning, Boxes, Sharpening, Tool control
Dale Osborne	(315) 524-7212	(315) 524-7212	dborn3@rochester.rr.com	General turning
Gary Russell	227-8527		cngRussell@gmail.com	General turning, bowls, ornaments, finials
Erwin A. Tschanz	271-5263 (Dec – Mar)	271-5263 (Dec – Mar)		Historical, bowls, plates, goblets, boxes, bone, antler

1. Here's a great way for you to improve your turning skills. FLWT has award winning and expert turners who, at no cost, are willing to share their expertise one-to-one with other club members. A mentoring relationship might be as simple as getting a mentor's advice in a one time conversation. Or, it might include regu-

lar hands-on sessions over a lathe. The exact nature is up to you and your mentor. If you feel you could benefit from mentoring, organize your thoughts about your needs and contact an appropriate volunteer mentor above to determine if he or she is a match and available. ♦



(585) 546-1400

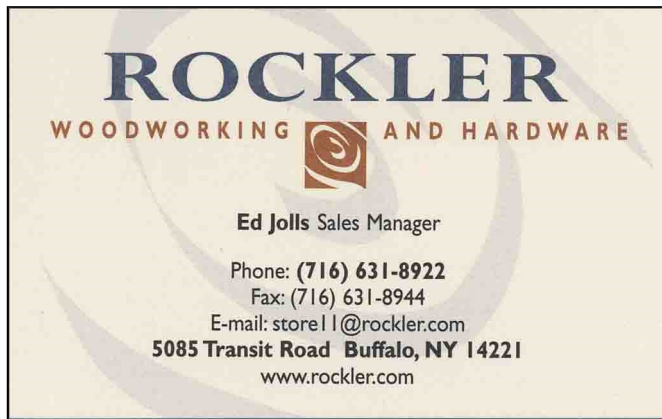
Rheem 95% Efficient Furnace for just \$75/mo

0.99% interest **+** for 48 months

+
Save even more with rebates and tax credits

Certain conditions apply. Offer expires 10/31/13

FLWT Thanks Rockler Woodworking and Hardware a 2013 Season Sponsor!



- FLWT members (must show membership card) receive a 10% discount.
- Excludes sale items, power tools & Leigh jigs, CNC, Festool, and Rockler Gift Cards.
- Valid at Buffalo, N.Y store only.
- Not valid with any other coupon or offer. ♦

FLWT Board of Directors 2012/2013

Position	Name	Home Tel	Cell Tel	Email
President / Chair	Mark Mazzo	265-4002	978-1926	mark@mazzofamily.com
Vice President	Bruce Trojan		261-7230	trojanbd@frontiernet.net
Secretary	Bill McColgin	586-1417	402-0967	mccolgin@rochester.rr.com
Treasurer	Clifford Weatherell	737-7815	737-7815	canoebuy@rochester.rr.com
Librarian	Gary Russell	227-8527		cngRussell@gmail.com
Newsletter	Dan Meyerhoefer	671-5595		d.meyerhoefer@att.net
Advisor	Jeffery Cheramie			
Advisor	Roger Coleman	288-0344		rogeracoleman@rochester.rr.com