

From The Chair – February 2015



**Mark Mazzo**

Our year of demonstrations is Moving full steam ahead! Last month we had a great demo by Cliff Weatherell on turning a suspended bowl. Well done, Cliff! I hope that we see lots of great examples at our next meeting.

This month, we will have a demonstration

of a Finial Box by Dan Meyerhoefer (these boxes are inspired by those of Cindy Drozda). These boxes are both beautiful and functional. Dan will be showing us all of the details on how he turns these beauties. Boxes are always a hit as gifts and these will be no exception.

Your Board of Directors is actively working to plan next year's season of events. So again, if you have an idea for what you'd like to see, we would be interested in hearing those suggestions. We are also interested in hearing about possible turners that you would be interested in having us bring in from outside the club (note: we try to stay somewhat regional to keep the travel costs to a minimum). Finally, if you are interested in demonstrating something to the club, please let us know! Even if you have a short topic that will not take an entire meeting, we can combine such topics with others who may have a similar situation. We do our best to try to cover as many topics of interest as we can and membership input is the best way for us to schedule a successful and informative season of events. So, speak up!

I also want to point out that at our April meeting we will be hosting National Turner, Beth Ireland ([www.bethireland.net](http://www.bethireland.net)). This will be a special Friday night meeting, Saturday demonstration and potentially a Sunday workshop with the required interest from the membership. Bruce Trojan wrote an article describing Beth's work and the topics later in this newsletter. So, mark your calendars! We will be sending out more information on the event in March and also accepting registrations for the Saturday demonstration and Sunday Workshop at that time.

I look forward to seeing everyone at our next meeting – until then, keep turning and keep learning!

Page	Contents
1	<ul style="list-style-type: none"> <li>From the Chair by Mark Mazzo</li> </ul>
2	<ul style="list-style-type: none"> <li>Schedule</li> <li>Call for Help</li> </ul>
3	<ul style="list-style-type: none"> <li>Beth Ireland Demo</li> </ul>
4	<ul style="list-style-type: none"> <li>Suspended Bowl Demo by Clifford Weatherell</li> </ul>
5	<ul style="list-style-type: none"> <li>Picture Essay of Suspended Bowl Demo by Clifford C. Weatherell</li> </ul>
6	<ul style="list-style-type: none"> <li>Members Show and Share</li> </ul>
8	<ul style="list-style-type: none"> <li>Events</li> <li>Mentors</li> </ul>
9	<ul style="list-style-type: none"> <li>Sponsors</li> <li>Board of Directors</li> </ul>
10	<ul style="list-style-type: none"> <li>ISAAC Location</li> </ul>

## Schedule — Call for Help

FLWT meetings are held from 6:45 to 9:00 PM (pre-meeting Show and Share starts at 6:00 PM) on the 3rd Thursday of the month each month. Our meetings are held at the Isaac Heating and Air Conditioning University classroom, 50 Holleder Parkway Rochester, 14615 . For more information, go to <http://fingerlakeswoodturners.com/>.

February	Dan Meyerhoefer – Finial Box
March	Sam Tischler – Lamp
April	<b>Beth Ireland (National Turner)</b> – Turning Outside The Box – National Speaker (Friday night meeting, Saturday demo, Sunday Workshop) see <a href="http://www.bethireland.net">www.bethireland.net</a>
May	Jim Hotaling – Fluting

### Call for Help By Jerry Sheridan

Several FLWT members and myself have taken great satisfaction in watching our woodturning mentoring program at Byron Bergen Central School grow. I should say that we have not stood back and watched. It has been a lot of hard work by many of our members. It has been a thrill to see the effectiveness of our program improve from year to year. Last year we had two FLWT members in the classroom five days a week. We were using the two Turncrafter Commander Lathes that the club owns, so this was one on one mentoring.

This year we have a new challenge. The demand for this class, Manufacturing Systems II, has doubled, necessitating the need for two periods to accommodate all the students. Teacher, Jay Wolcott, feels the woodturning program has definitely added to the greater popularity of this course. Is this great or what? We are having a strong influence on tomorrow's woodturners.

Our challenge is this: How are we going to cover two classes? One possible solution would be to have two mentors in one class, and one mentor in the other class for a week and then alternate week to week. This would give a class one on one mentoring for a week, followed by one member for two students the following week.

This will increase our need from two mentors per day to three. Will you please help us accomplish this? We have a great core group of volunteers, but we do need more help. The two classroom periods are 10:08 to 10:50 am and 12:10 to 12:52 pm.

We also continue to look for projects that would interest the students, grade 11 and 12. If you have something in mind, and could donate a sample, that would be great.

Also, we have reapplied for the \$1,500.00 AWA Grant, with the intention of getting some new lathes for the school.

I know I am asking a lot but we are accomplishing a lot. We are having a tremendous influence on students who want to learn a trade. They are learning hands on skills that will nicely balance the book learning and computer technology they receive in their other classes.

Thanks,  
Jerry

## Guest Speaker

### BETH IRELAND TO VISIT FINGER LAKES WOODTURNERS

By Bruce Trojan

Nationally known woodturner/woodworker Beth Ireland will be coming to the Finger Lakes Woodturning Club on April 17 - 19. A highly experienced teacher, she has taught, lectured, and demonstrated at many schools, including Anderson Ranch (CO), Arrowmont (TN) the Worcester Center for Crafts (MA), the Boston Architectural Center (MA), the Connecticut School of Woodworking (CT), and the Center for Furniture Craftsmanship (ME).

She will be presenting a slide demonstration on Friday, April 17, a demo on Saturday, April 18 and is available for a hands on workshop on Sunday, April 19. Of the topics she may cover are: Turning With Your Mind - creative problem solving and learning to use a chart to come up with an original idea; Turning Outside the Box - how to marry the bandsaw with the lathe to create boxes and patterned platters; Graphic Turnings - how to use graphs to plot out designs (twists, spirals and pineapples) on spindles, bowls, and vessels; How to Turn Guitar and Ukulele Necks - Utilization of split and off-set turning.

As usual with our national guest presenters, the general meeting will be moved to FRIDAY (April 17) and is free and open to all. The Saturday demonstration will cost \$35 and Sunday workshop \$65. Information on signing up for the events will follow soon. Put it on your calendar and make sure you come. With all her experience, this will be an enlightening and fun time!

Beth is a 1979 graduate of State University College at Buffalo, where she received a Bachelors degree in Art Education. She has run Beth Ireland Woodworking since 1982. The company specializes in architectural woodturning, furniture and cabinetry. Her artistic woodturnings have been seen in galleries throughout the United States and in publications such as *Bead and Button*, and *Design Book 7* by Taunton Press. She currently resides and works in Roslindale, MA.

Beth's website is at; <http://bethireland.home.comcast.net/~bethireland/pages/bio.html>

# Suspended Bowl Demo by Clifford C. Weatherell

By Bruce Impey



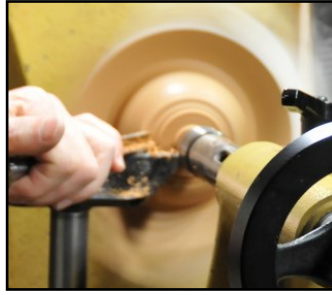
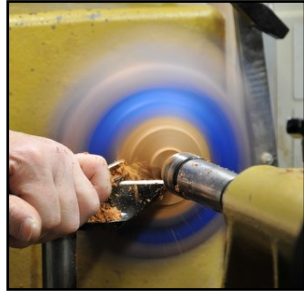
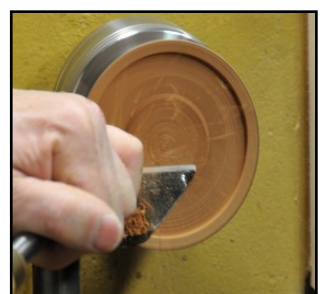
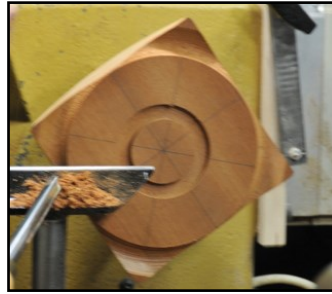
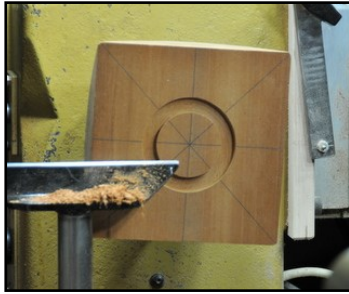
Cliff Weatherell gave a demonstration of making a Suspended Bowl at our January meeting. He brought a finished Mahogany bowl with lid, some coasters of the same theme and blanks for the demo out of the same material. I learned that what makes a bowl “suspended” is that the feet, extended from the top edge of the bowl touch the table, but the bottom of the bowl does not. Cliff handed out a detailed illustrated instruction that should bring everyone successfully through a challenge project attempt.

To start, the blank must be square all the way around. If it's not square and centered, the points of the feet will not be equal. The inside diameter of the bowl shouldn't be too big or the sides will end up too steep. 2/3 of the blank size should do. Cliff starts turning the blank on jumbo jaw chucks, so it's centered, and cuts a groove in what will be the bottom for mounting the block on #2 jaws. He uses three tools for this project; scraper, bowl gouge and parting tool. The work gets flipped front to back, and the parting tool is used to define the bowl edges and another chucking stub. There were numerous rechucking steps and Cliff reminded us to mark the #1 jaw position on the tenons. The bowl edge is a bead barely large enough to allow chucking later with #3 jaws. The sweep from rim to foot is then cut with the bowl gouge. Some tear out might be a problem and take care not to cut the foot down past the original corner of the blank.

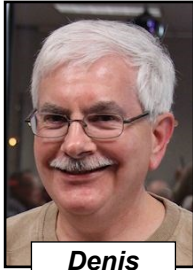
It's important to know how big the inside of the bowl is before turning the bottom of it because you can't feel your way. Measure the bowl ID before reversing the blank again and mark this plus wall thickness on the reverse. Cut outside this circle to form the legs. Since the legs are unsupported, get the thickness right as you are cutting them down, then shape the bowl bottom leaving the tenon. Flipping the bowl again, the inside of the bowl can now be turned, sanded and finished. It is difficult to finish the legs on the lathe. Chuck the lid blank and turn the underside. Then reverse the lid blank and jam chuck it on the base. Turn the lid to the contour of the legs without cutting into the base. Tape the lid to the base to turn off the tailstock stub. Now the base can be reversed again and with #3 jaws on the chuck the raised bead on the top can be gripped to carefully turn off the bottom of the bowl.



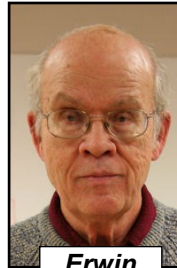
Picture Essay of Suspended Bowl Demo by Clifford C. Weatherell



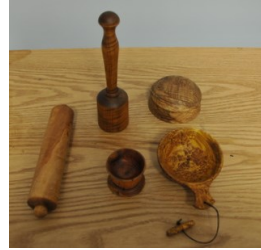
# Members Show and Share



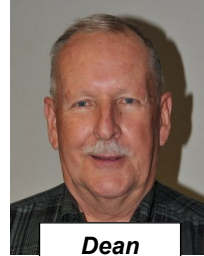
**Denis  
Caysinger**



**Erwin  
Tschanz**



**Bruce  
Impey**



**Dean  
Jones**



**Dave  
Gilbert**



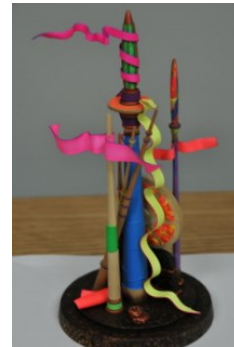
**Terry  
Lund**



**Mike  
Hachey**



**Bruce  
Trojan**



**Rick  
Burquest**



**Greg  
Zohnowski**

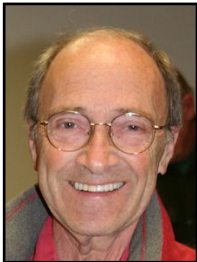
# Members Show and Share (con't)



**Harry  
Stanton**



**Gary  
Russell**



**Marty  
Chatt**



**Gregg  
Miller**



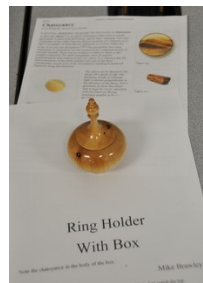
**Sam  
Tischler**



**Harry  
Beaver**



**Mike  
Brawley**



# EVENTS AND MENTOR CONTACTS

## Local and National Woodturning Events of Interest

Year/Date	Event	For More Information
June 25-28, 2015	AAW Symposium—Pittsburg, PA	<a href="http://www.woodturner.org/">www.woodturner.org/</a>
March 28-29, 2015	Totally Turning- Saratoga Springs City Center	<a href="http://www.nwawoodworkingshow.org/">http://www.nwawoodworkingshow.org/</a>

## Mentor Contacts<sup>1</sup>

Name	Day Tel	Eve Tel	Email	Turning Skills / Specialty
Doug Crittenden	924-5903	924-5903	<a href="mailto:cleo99@frontiernet.net">cleo99@frontiernet.net</a>	General turning
Ed DeMay	406-6111	924-5265	<a href="mailto:edemay@rochester.rr.com">edemay@rochester.rr.com</a>	Bowl turning, dust collection
Ward Donahue	334-3178	334-3178	<a href="mailto:wddonah@frontiernet.net">wddonah@frontiernet.net</a>	Spindle & hollow turning, coring, sharpening
Jim Echter	377-9389	377-9389	<a href="mailto:jechter@rochester.rr.com">jechter@rochester.rr.com</a>	Spindle & faceplate turning, sharpening
David Gould	245-1212	245-1212	<a href="mailto:D2sGould@aol.com">D2sGould@aol.com</a>	Bowls, plates and hollow-forms
Jim Hotaling	223-4877	223-4877	<a href="mailto:jhotaling2198@aol.com">jhotaling2198@aol.com</a>	Christmas ornaments
Ed Lehman	637-3525		<a href="mailto:elwj@rochester.rr.com">elwj@rochester.rr.com</a>	General turning
Ralph Mosher	359-0986	359-0986	<a href="mailto:2rmosher@rochester.rr.com">2rmosher@rochester.rr.com</a>	Bowl turning, Boxes, Sharpening, Tool control
Gary Russell	227-8527		<a href="mailto:cngRussell@gmail.com">cngRussell@gmail.com</a>	General turning, bowls, ornaments, finials
Erwin A. Tschanz	271-5263 (Dec – Mar)	271-5263 (Dec – Mar)		Historical, bowls, plates, goblets, boxes, bone, antler

**1. Here's a great way for you to improve your turning skills. FLWT has award winning and expert turners who, at no cost, are willing to share their expertise one-to-one with other club members. A mentoring relationship might be as simple as getting a mentor's advice in a one time conversation. Or, it might include regu-**

**lar hands-on sessions over a lathe. The exact nature is up to you and your mentor. If you feel you could benefit from mentoring, organize your thoughts about your needs and contact an appropriate volunteer mentor above to determine if he or she is a match and available. ♦**



## SPONSORS

**ISAAC**  
**Heating & Air Conditioning**

*When you need us, we'll be there. ®*



Furnaces • Air Conditioners • Water Heaters • Dehumidifiers • Duct Cleaning  
 Gas Fireplaces • Home Energy • Plumbing • Generators • Insulation • Boilers

**IsaacHeating.com**

**(585) 546-1400**

**ROCKLER**  
 WOODWORKING AND HARDWARE

Phone: (716) 631-8922  
 Fax: (716) 631-8944  
 E-mail: store11@rockler.com  
 5085 Transit Road Buffalo, NY 14221  
 www.rockler.com

- **FLWT members (must show membership card) receive a 10% discount.**
- **Excludes sale items, power tools & Leigh jigs, CNC, Festool, and Rockler Gift Cards.**
- **Valid at Buffalo, N.Y store only.**
- **Not valid with any other coupon**

### FLWT Board of Directors 2015

Position	Name	Home Tel	Cell Tel	Email
<b>President / Chair</b>	Mark Mazzo	265-4002	978-1926	<a href="mailto:mark@mazzofamily.com">mark@mazzofamily.com</a>
<b>Vice President</b>	Sam Tischler		908-295-3010	<a href="mailto:tischler.sam@gmail.com">tischler.sam@gmail.com</a>
<b>Secretary</b>	Bruce Impey		607-382-3531	<a href="mailto:go2isles@linkny.com">go2isles@linkny.com</a>
<b>Treasurer</b>	Dave Ververs		721-8944	<a href="mailto:ververs@rochester.rr.com">ververs@rochester.rr.com</a>
<b>Librarian</b>	Gary Russell	227-8527		<a href="mailto:cngrussell@gmail.com">cngrussell@gmail.com</a>
<b>Newsletter</b>	Dan Meyerhoefer	671-5595		<a href="mailto:dtmblue@google.com">dtmblue@google.com</a>
<b>Advisor</b>	Jeffery Cheramie			
<b>Advisor</b>	Ralph Mosher		359-0986	<a href="mailto:2rmosher@rochester.rr.com">2rmosher@rochester.rr.com</a>

**ISAAC HEATING AND AIR CONDITIONING LOCATION  
50 Holleder Parkway**

