

## February 2021 FLWT Meeting

Our meeting on Thursday February 18 begins at 7:00pm, and we will feature Jim Echter via remote demonstration. The topic of Jim's demo is, "Chucking and Mounting Wood on Your Lathe". You just got your first lathe or you just want to try some new/different projects. Let's learn about how to properly and safely mount wood so you can begin making chips. In this program, Jim will show us several different methods of mounting spindles between centers. Then he will explore face grain and bowl blank mounting methods. After you turn a bowl, how do you finish the bottom? Jim will discuss jam chucks, plate jaws, donut chucks and vacuum chucks. He will wrap up with introducing us to friction drives, collet chucks and a few other interesting methods of mounting wood on your lathe.



Bring your questions or unusual chucks you may have purchased or built to contribute to the discussion.

Read more about Jim's work [here](#).

**IT'S BACK!!!**  
**MONTHLY CHALLENGE**  
Offset or Multi-Axis Turning  
Send your photos to  
[newsletter@fingerlakeswoodturners.com](mailto:newsletter@fingerlakeswoodturners.com)

## What's Inside

- ♦ [Presidents Letter](#)
- ♦ [MENTORS](#)
- ♦ [Multi Axis Demo](#)
- ♦ [Twice Turned](#)
- ♦ [Super Show and Share](#)
- ♦ [Win one Bring One](#)
- ♦ [Turners Toolbox](#)
- ♦ [Stump Woody](#)
- ♦ [Group Buy/Library Report](#)
- ♦ [Social Media Update](#)

## Important Dates

Feb 3 Show and Share  
Feb 9 Virtual Breakfast  
Feb 18 FLWT meeting & demo  
Feb 23 Virtual Breakfast

## FLWT Mentoring Program

Here's a great way for you to improve your turning skills. FLWT has award winning and expert turners who, at no cost, are willing to share their expertise one-to-one with other club members. A mentoring relationship might be as simple as getting a mentor's advice in a one time conversation. Or, it might include regular hands-on sessions over a lathe. The exact nature is up to you and your mentor. If you feel you could benefit from mentoring, organize your thoughts about your needs and contact an appropriate volunteer [Mentor](#) to determine if they are match and available. It may be possible to schedule a mentoring session over zoom.



## President's Letter February 2021

Now that winter has fully settled in, I hope everyone is getting a chance to get out to their shops and try something new. To that end, the Board agreed in January to restart the monthly challenge project. For this month, the challenge is to try some offset or multi-axis spindle turning. To enter the challenge, you need to submit a picture – or more than one photo – to [newsletter@fingerlakeswoodturners.com](mailto:newsletter@fingerlakeswoodturners.com) – before our next monthly meeting on February 18. We will display your images before the demonstration, and one submitter will be chosen at random to receive a gift certificate prize.

The 2020-21 FLWT season has started with a bang! Since September, we have 22 new members – a new record for us – making a total of 121 members in all! By the time this publishes, the video from last month's multi-axis turning demo will be available, and I hope every single one of you with a lathe gives it a try, and we are swamped in pictures of multi-axis turnings in the February meeting.

Our focus on education has taken a slight slowdown since COVID hit, but it has not stopped. As you know, in addition to the high-quality demos from our club members (some of whom are national level turners), we are bringing in 6 national turners from outside this year to teach new techniques and concepts. We are continuing work on the 10 full-sized lathes at St. Michaels – readying power and dust collection in anticipation of the time we can bring national turners to Rochester for another hands-on event. We instituted the monthly S3 to share tips and techniques between FLWT members – a very successful addition. Last month, the Board reviewed our treasury and decided to release the 2020-21 funding for the Library. If you have suggestions on books, DVDs, or tools that we should add to the Library, send a short note to Denis Caysinger at [library@fingerlakeswoodturners.com](mailto:library@fingerlakeswoodturners.com).

As we all move forward into 2021, I want you to know how much I appreciate all of our members, all you are doing for each other and the club. Keep trying something new!

-Phil

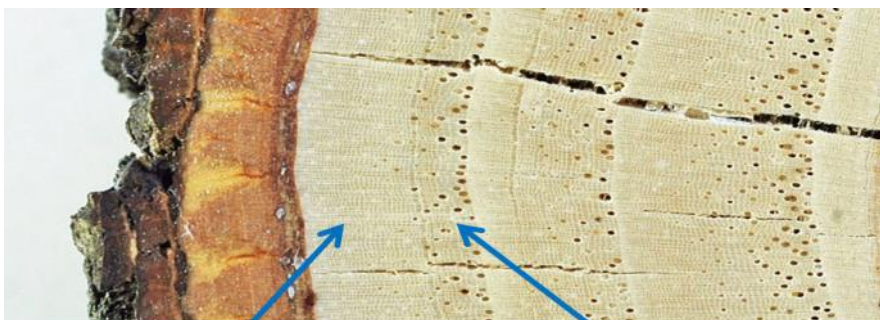
### Stump Woody



Ask Woody a question  
If they don't know the answer  
you win a prize  
Submit your questions for Woody  
[here](#)

Q. Woody, Why aren't growth rings always uniform in appearance?

A. A growth ring is comprised of spring wood (or early wood) and summer wood (or late wood). Typically a tree grows faster in spring causing a more porous, softer structure. If you look closely at the spring wood you may even be able to determine wetter years. It is often the difference in hardness between spring and summer wood that gives turners a problem when sanding, giving an uneven feel. Clean cuts and light pressure when sanding will help eliminate the unevenness.



Summer wood

Spring wood

Annual growth ring



# MULTI AXIS TURNING

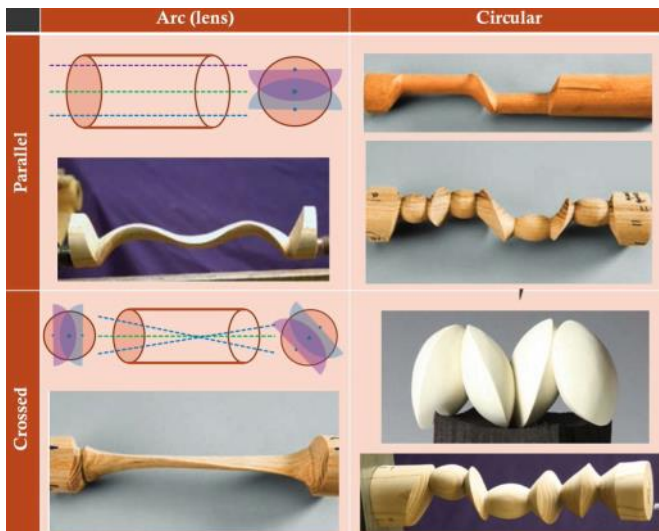
January 2021 Demonstration by Phil Rose

Written By Jim Pressey

At the January meeting, our president Phil Rose, demonstrated several different types of off-axis/multi axis turning. Phil started off by showing several chucking options, the Vicmarc Eccentric chucks, Sorby eccentric chuck, the wobble chuck and "make your own homemade chuck" design.



Phil explained a systematic approach to the ways to turn multi access projects including parallel off-center axis and cross center axis.



**First demo: Circular Cross Axis** using a 2"x2"x6" piece of maple. Phil drilled a hole in one end for a test tube to be inserted when finished. For now, he used a jig he made to fit into the hole that "bottomed out" and then chucked it between centers. He rounded the blank using a spindle roughing gouge. He marked off the 6" piece into thirds then turned a neck on the tailstock end, tapering it to the first third being careful not to cut too deep, (remember there is a hole drilled into that end). The live center left a ~ 1/4 inch "ring" on the headstock end. He now used it to off-set the center. At approximately 2400 rpms and using a 1/2 " detail spindle gouge with 35 degree grind, he cut two-V cuts on

the end and deep enough to cut into the solid wood. I noted his gouge was used at a 2-3 o'clock position and moved to a 3 o'clock position at the inside end cut. The second cut was made starting at the 10 o'clock position and ending at the 9 o'clock position. Continue this cut and stopping frequently to check the "planes" for crisp V cuts that come together. You can sand now. Switch ends and put a



concave bottom on the piece. Phill finished the piece using Deft Clear wood finish-Gloss (lacquer finish).

**Second demo: "Goblet with a Twist"** 1 1/2"x 1 1/2 "x6" piece of cherry. Place between centers and turned round. Produce a tendon the tailstock end. Chuck up and turn a cup on the tailstock end. Phil used a Jimmy Clues Mega Mate to hollow the cup out. Phil also uses a spindle steady rest on his lathe for these cuts. Loosen the headstock chuck and pull one side of the piece out of the chuck approximately 1/16" and retighten. The piece now no longer turns true and you can start your V cuts. Cut first from the cup to the body (same as in 1<sup>st</sup> example). Using a detail gouge. The cut a small stem between blank and the V-cut. You must sand now before repositioning the piece.

Now come off the chuck in a different place, and make another V cut and bead. Make a cove cut to come up and meet the bead then another cove/bead.

Offset a third time ~3/32" make V cuts until flat spots are gone.



Finish off the piece back in between centers and use a "Rubber Chucky" in the tailstock against the cup opening

(Continued on page 4)

(Continued from page 3)

for support. Finish off the piece using a parting tool and concave the bottom slightly.

**Third Demo: Arc or Half Moon Twist:** (that's what I call it.) Using a 1 ½ "x 1 ½ "x 6" Cherry. Using a small 3/8" pronged drive centers turn wood round. Mark ¾ "to 1" from each end the draw a "witness" mark down the center of the wood and a circle on each end around the center drives. Now mark across ends of blank from the witness line making four points on each end. Make 4 holes using a punch/awl at these points. Place piece in outside holes parallel to each other for an offset. At approximately 3000 RPMs cut two ½ moon, arc shapes from the outside lines to the center. A black or white cloth placed under your turning will help you see the air-cut easier. Make these cuts about ½ way through.



Now move to opposite side of center and make an Arc cut in the center third. Then make V cut into the arc on both ends. Next return work piece to center holes and transition off piece. Transition wood down to 3/8" tendons on each end. Saw off the end and place cup on end.

**Fourth Demo: Cross Axis** Using a 1 ½ "x 1 ½ "x 6" Cherry. Round the work piece. Mark a circle on each end around the center drives, maybe a 1/4" from the edge. Mark the blank 1" in from each end and place a witness mark down the center of the blank. Using 120 degrees mark each end of the blank with 3 points and number both



ends 1, 2, and 3. Line up point one and point two for and offset cross axis. Rough gouge 1/3 depth then reset the axis points to #2 and #3 and again rough gouge 1/3 depth. Check depth to 1/3<sup>rd</sup> depth (same as first cut). Then reset axis to #3 and #1. Same cut again. Next do a ½ bead on one end and a tenon on both ends for the cup and base.

## Rudy Lopez Update

Rudy sent the link and password to access the video of his demonstration last month. As a nice bonus, you will be able to review videos from a variety of his demonstrations over the previous few months. We have posted the information on the Club Videos page on our web site, you must be logged in to view:

<https://www.fingerlakeswoodturners.com/club-videos/>

Available for Until Feb 13



## Tops

Just because the holidays are over does not mean we should stop turning tops. To date we have over 800 tops donated, just short of our 1000 top goal. Remember for every 10 tops you donate, you will get one ticket to the tops raffle. The more tops you turn in, the more entries you will have!

Please include a piece of paper with your tops that has your name and number of tops. Each site will have a collection box on the front porch, so you don't need to call in advance.

Jim Byron - 131 Chelsea Meadows Drive, W. Henrietta  
Denis Caysinger - 365 Peck Rd, Hilton  
David Gilbert - 696 Hightower Way, Webster  
Mike Sullivan - 18 Brookside Dr., Fairport

## FLWT Social Media Links





# Twice Turned

Repost Featuring — Erv Tschanz (originally published March 1997)

## Last Months Demo by Ed DeMay

Last months demonstration was presented by Erv Tschanz on hollowing small boxes and in mostly end grain. Erv is known throughout the US for the historically correct 18th and 19th century reenactment items that he produces. In addition to our demo Erv demonstrates for a variety of organizations about outdoor life and how to survive as our ancestors did. Erv displayed and discussed a variety of tools for accomplishing this task. Erv uses scrapers, hook tools and ring tools. Many of the tools Erv uses he has developed and makes himself after much research and trial and error to accomplish the required task.



Erv listed and demonstrated the best points of each of the tools he uses. He went on and also spoke of the pitfalls of certain tools and that they do a very good job of cutting but can be tricky if one does not stay well focused. His easy going manner is obvious and only goes to enhance his presentation. Erv not only shared the techniques that he uses but explained many of the reasons why certain items are made the way they are. The early turners took advantage of the characteristics of wood to enhance the objects that they turned and used. There were many questions concerning the how's and whys of end grain turning.

Lastly Erv covered some of the finishes that he uses. Since these items for the most part were utilitarian items they did not call for highly polished and flashy finishes that are used today. Many were just coated

and lightly polished using bees wax or sometimes just left to develop a patina over time that we so desperately try to duplicate today. Thanks for a great demonstration Erv and we are all looking forward to your next one.



---

Editors Note: We Thank Erv for years of sharing his expanse historical knowledge and continued mentorship with the club.

# Turners Toolbox

Send in your tips to share with members

## Swing down handles

This comes from my late father, Bill Tschorke, who placed them on all his lightweight equipment. I'm not sure this is his original idea but they certainly work well. As I was photographing, the thought came to mind that dad would suggest building a movable cabinet for each small piece such as this spindle sander, a router table, scroll saw or whatever. He built them all with two casters in the back and two solid legs in the front. In our cramped shop spaces these are all conveniently rolled out when needed. Battleship



Gray was his choice of color, possibly a carryover from his years in the Navy, anyway, I'm fortunate to have a shop full of it. -Dick Tschorke

## Clean it Up

We all do things to protect our lungs against fine wood dust that gets airborne in our shops. There is also an even bigger hazard with ultra fine metal dust from sharpening our tools that becomes airborne. I place several magnets



(circled in red) on my grinder to attract these particles. In the picture you can see a bar magnet as well as 3 smaller magnets. There are also a couple small magnets on the outside of the blue wheel housing you can't see. All these magnets came from Harbor Freight with a total cost of less than \$10. It's a small price to save your lungs from the very dangerous ultra fine metal grinding dust that will get airborne. -Jim Byron

My number one shop habit is clean up at the end of the day. It is much easier to get enthusiastic about starting a new project in a clean shop. -Cliff Weatherell

I got this tip from John Jordan, spray down your lathe rails and moving parts on the rails daily with wd-40. I thought it would accumulate a big mess but not at all. -Jon English

Editors Note: This is especially helpful for green woodturners. John Jordan also treats his tool rests and turning tools the same way. Be sure to apply sparingly and wipe down good.

## Newsletter Update Volunteers Needed

We are seeking a few newsletter reporters and contributors to make this publication work. Some of the ways you may help:

- ◆ Super Show And Share Reporter
- ◆ Monthly Demo reporter
- ◆ Article Contributions - Current projects, member profiles
- ◆ Tool tips and reviews
- ◆ Any Ideas are welcome

[Most Important](#)  
[Send Photos!!!](#)





## Turners Toolbox

Send in your tips to share with members

### Extra Leverage



I keep a small scrap of stock (mine happens to be 1/2 x 1/2 x 8 inches) stored on top of my headstock for use when removing my chuck from the lathe. I put the scrap in the jaws, give it a gentle pull, and the chuck is free to unscrew. Seems like a better method than yanking on the chuck key. -Doug Crockett

### Stance Matters

Before starting to cut, before the ABCD exercise, put your feet at comfortably apart distance so that you can begin and end the Dance part without having to move your feet. You'll make a more consistent cut this way. I've seen Ellsworth move the tool along the toolrest from one end of a piece to the other end before starting the lathe to check his positioning for just this reason. -Anonymous



## Social Media Update

By Larry Lobel

We now have a FLWT Facebook group page and a FLWT Instagram account. Club members are welcome and encouraged to participate on our social media accounts.

Facebook users may join our group and are encouraged to post pictures of their work. Always feel free to ask questions and make comments on member posts. .

Instagram may be new to many of you, it is an image based social media platform with limited discussion. Many well known turners have accounts and share pictures of their work and techniques. If nothing else this is good reason to join.

The goal of the club Instagram account is to promote wood turning and showcase the incredible talent we have within the club.

Members may have their photos posted to the club account page by sending them to:

[newsletter@fingerlakeswoodturning.com](mailto:newsletter@fingerlakeswoodturning.com)

Please specify it is for the Instagram page. No work will ever be posted without the permission of the maker.

You don't have to have an Instagram account to view our page but it is a lot more fun if you do. We have over 100 followers on our page, please consider joining Instagram.

If you need any help with social media feel free to contact [Larry Lobel](#) social media account administrator.

### FLWT Social Media Links



## Library Notes

By Denis Caysinger

Reminder, the FLWT Library is open.

We have had very few Library checkouts since June 2020. The FLWT Board, rightly concerned about club finances given extra investments for national turner IRD's, has asked the Librarians to hold off spending any of the 2020-2021 Library budget until checkout activity increases. If members do not begin to use the Library resource, the budget for next year may also be zeroed out.

Our President, Phil Rose, has been encouraging members to "try something new". Education from our extensive DVD and book library can help in this regard.

Members can see the items that we have in the Library by going to the following link on the FLWT page:

<https://www.fingerlakeswoodturners.com/resources/library/>

If you see an item you want, please email Denis with the item number to: [library@fingerlakeswoodturners.com](mailto:library@fingerlakeswoodturners.com)

Denis will let you know if the item is in stock or checked out. If the item is in stock, we will discuss how you can get the materials.

For returns there are a number of people across Monroe County who have signed up to be "return sites" for you to drop off items. The names and addresses of the "return sites" will be included in the emails that Denis will send out to get checked-out items returned. All returned items will be quarantined for 72 hours per CDC guidelines before being put back into stock.

Please don't hesitate to take advantage of this important member benefit.

Gary Tveit & Denis Caysinger



Dave Ververs

## Member Benefit - Group Buys

By Pete Shea

As a member of FLWT, members may receive discounts on turning products from various suppliers. The Group Buy Process has a goal of obtaining Lathe Supplies and Accessories for members at a reduced individual cost by buying larger volumes and having consolidated shipping. To this end we have established ongoing relationships with multiple suppliers and we usually make annual group purchases. Any member can request that we do a group buy either with a preferred vendor or a new supplier. Traditionally we do one time engagements with new suppliers after seeing a professional club demonstration and see an item that we must have for our shop.

The Group Buy process is initiated with an email to FLWTmembers identifying the item being sourced, estimated costs, and due date to place an order. Please note, last minute member orders may impact the process to obtain the best discount possible and create extra work to insure everyone gets their requested items.

Supplier discounts can be in many forms as follows: Percent discount, Percent discount with a minimum order value, free shipping, credit back to club in the form of gift certificates or gift certificates to club based on membership numbers. A full detail of the discount types is located on the web in the FLWT Member Section/Member Discounts [www.fingerlakeswoodturners.com/member-discounts/](http://www.fingerlakeswoodturners.com/member-discounts/)

Members do not pay for the item until it is received and payment is made directly to the GroupBuy Coordinator (currently Pete Shea via Paypal-Friends & Family, Cash or Check). Members are notified of the item arrival and pickup/delivery is established.

This process is a significant benefit to members and has been very successful in providing quality discounted items to all members. It is a team effort and everyone benefits.

Pete Shea —Group Buy Coordinator



Pete Shea



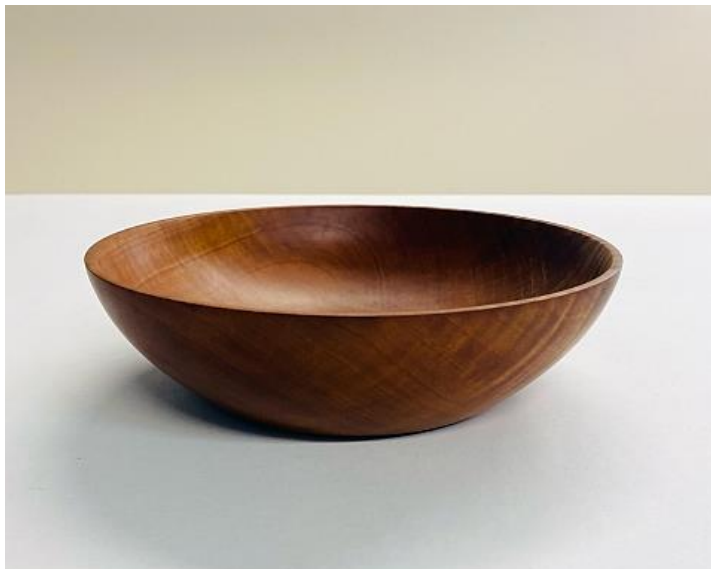
# Win One - Bring One

We've started a new member benefit for the 2020-2021 year, to make it easier for our members to obtain a turned item from other members, and we've called this activity the Win One - Bring One Raffle.

Twice a month, at the S3 meeting and the Monthly meeting, we do a drawing among the members at each of the meetings. The winning name is the winner of the donated piece that month, and they "bring back" any turned piece they have made at the meeting in the following month.



Turned By: Van Bicknell      Won by: Cliff Weatherell



Turned By: Doug Crocket      Won by: Kenny Fellers

A complete archive of the Win One, Bring One can be found on our website in the [Resources](#) section.

## Virtual Breakfast



Second Tuesday  
February 9

Last Tuesday  
February 23

# Super Show and Share

FLWT Members,

First of all, I would like to thank every individual that has taken the time to take a picture or two of their turnings and submitting them to the S3 Event. It is because of you that we have just had a 2 hour presentation on the different items that the club membership is creating. Personally, I have been so happy to see the S3 grow and have been more than happy to give the membership the forum to show off their talents. This event could have never occurred without the help from the membership. I am just a collector of digital images of some of the most amazing pieces of work I have seen produced. It is a pleasure to give you the opportunity to talk about your pieces.

As a result of your willingness and desire to share images of your turnings, this process of putting together the slide presentation has become somewhat overwhelming with my job and other responsibilities that I have. As a result, I am requesting you use the following link to submit your photographs. (Yes, you do have to click on the blue text labeled S3 Submission Link below to access the link.)



This link will be posted behind the closed doors of the Members Only section of our website and will be emailed out to you when requesting pictures for the S3.

Since the S3 has continued to grow, the number of pictures that have been submitted has become something that takes me a ton of time to put together. Usage of this form will allow me to put together a form that will take significantly less time to prepare. There is still monthly preparation for me, but it cuts the time down by using a mail merge system to import the pictures to use in the final presentation.

During the February S3 event you will have a demonstration on how to use the form to submit your digital content for the S3. We are still working out some of the kinks and undoubtedly will have some catches -pun intended- but the system is really easy to use with any smart device.

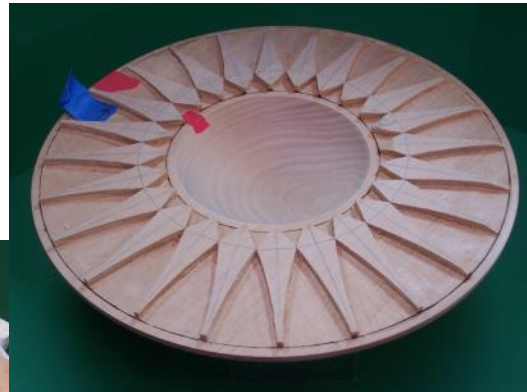
Thank you for helping make the S3 grow into what it has become, and hopefully we can make it even better over the next year. Just remember...keep taking those pictures.

Jeffery





# Super Show and Share



**Albert Filo**



**Larry Lobel**



# Super Show and Share



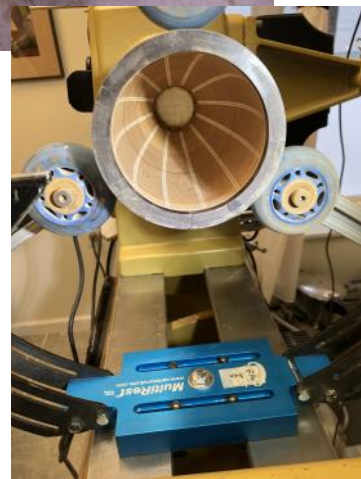
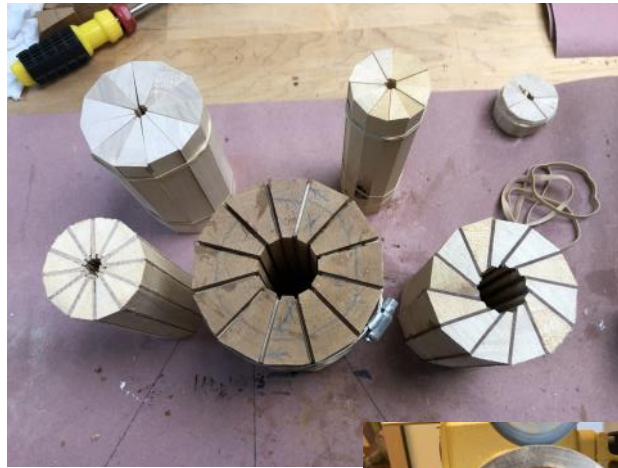
**Dave Ververs**





# Super Show and Share

**Paul Wilkens**



# Super Show and Share

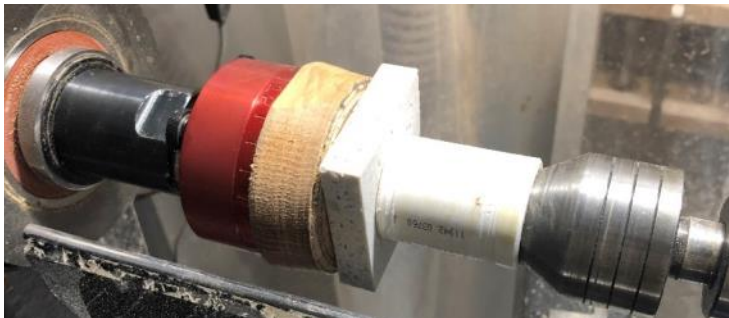
## Dave Gilbert –Contour Gauge





# Super Show and Share

## Pete Shea Niles Jig Medallions





# Super Show and Share

## Cliff Weatherell



## Joe Wisnet





# FLWT Demonstration Schedule 2020-2021

Sept 17	<del>Trent Bosh – Decorative Utility Bowls</del>
Oct	<del>Cindy Drozda – Finial Box</del>
Nov	<del>Joe Wiesnet – Bottoms Up – Foot First</del>
Dec 17	<del>Rudy Lopez – Natural Edge Wing Bowl from half log or crotch section</del>
January 21	<del>Phil Rose – Multi-Axis Turning</del>
February 18	Jim Echter - Chucking and Mounting Wood on Your Lathe
March 18	Tod Raines - Using Hook Tool – end grain hollowing + small wine glass if time
April 15	Bruce Impey - Manx Bowl Inlays (stay tuned )
May 18	David Ellsworth - Hollow Forms
June 17	Larry Lobel - Camera System with Hollowing
July 15	Dave Landers - Three Piece Goblets
August 19	Jeffrey Cheramie - Topic TBD

# FLWT Demonstration Schedule 2021-2022

Sept 16	Jimmy Clewes - Colored Rim Platter
Oct 21	FLWT Member Demo - Topic TBD
Nov 18	Harvey Meyer - Basket Weave Illusion
Dec 16	Round Robin Holiday Celebration Returns (hopefully)



**Albert Filo**

## Mentor Contacts

Name	Phone	Email	Turning Skills / Specialty
Mike Brawley	755-2714	<a href="mailto:mbrawley@rochester.rr.com">mbrawley@rochester.rr.com</a>	Design Principles, Spindles; Bowls and Platters; Sharpening
Jim Byron	478-9911	<a href="mailto:jimbyronhome@yahoo.com">jimbyronhome@yahoo.com</a>	General Turning; Bowls, Spindles; Hollowing; Sharpening
Ward Donahue	334-3178	<a href="mailto:wddonah@frontiernet.net">wddonah@frontiernet.net</a>	Spindles; Hollowing; Coring; Sharpening
Jim Echter	704-7610	<a href="mailto:jechter@rochester.rr.com">jechter@rochester.rr.com</a>	Spindles; Sharpening; Faceplate turning
David Gould	245-1212	<a href="mailto:d2sGould@aol.com">d2sGould@aol.com</a>	Bowls; Plates; Hollow-Forms
Jim Hotaling	223-4877	<a href="mailto:jhotal2198@aol.com">jhotal2198@aol.com</a>	Christmas Ornaments
Terry Lund	455-2517	<a href="mailto:terry.lund@gmail.com">terry.lund@gmail.com</a>	General Turning; Dust Collection Design and Installation, Sharpening
Ralph Mosher	359-0986	<a href="mailto:2mosher@rochester.rr.com">2mosher@rochester.rr.com</a>	Bowls; Faceplate Turning, Sharpening
Erwin Tschanz	271-5263	<a href="mailto:TschanzLandscape@aol.com">TschanzLandscape@aol.com</a>	Historical; Bowls; Plates; Goblets; Boxes; Bone; Antler
Gary Russell	353-3148	<a href="mailto:cngRussell@gmail.com">cngRussell@gmail.com</a>	General turning, bowls, ornaments, finials

## FLWT Board of Directors 2020/2021

Position	Name	Phone	Email
President / Chair	Phil Rose	(585) 267-9857	<a href="mailto:president@fingerlakeswoodturners.com">president@fingerlakeswoodturners.com</a>
Vice President	David Gould	(585) 245-1212	<a href="mailto:d2sgould@aol.com">d2sgould@aol.com</a>
Secretary	Mike Sullivan	(585) 388-0047	<a href="mailto:MJSullivan@rochester.rr.com">MJSullivan@rochester.rr.com</a>
Treasurer	Jim Byron	(585) 478-9911	<a href="mailto:jimbyronhome@yahoo.com">jimbyronhome@yahoo.com</a>
Director	Terry Lund	(585) 455-2517	<a href="mailto:Terry.lund@gmail.com">Terry.lund@gmail.com</a>
Advisor	Jim Echter	(585) 704-7610	<a href="mailto:jechter@rochester.rr.com">jechter@rochester.rr.com</a>
Advisor	Clifford Weatherell	(585) 737-7815	<a href="mailto:canoeboy@rochester.rr.com">canoeboy@rochester.rr.com</a>
Librarian	Denis Caysinger	(585) 737-8235	<a href="mailto:dcaysinger@gmail.com">dcaysinger@gmail.com</a>
Librarian	Gary Tveit	(585) 293-2412	<a href="mailto:garytveit@mac.com">garytveit@mac.com</a>
Newsletter Editor	Larry Lobel	(585) 233-8951	<a href="mailto:newsletter@fingerlakeswoodturners.com">newsletter@fingerlakeswoodturners.com</a>



## FLWT Sponsors

**Keep your family warm & comfortable  
all winter long**

with Isaac's expert 24/7 service & new installation

**ISAAC**  
Heating & Air Conditioning

**585-546-1400**



**SELECT QUALITY  
WOODTURNING PRODUCTS**

*From One Woodturner to Another*

[www.BuffaloWoodturningProducts.com](http://www.BuffaloWoodturningProducts.com)

## Become A Member

FLWT Meetings are held every month on the 3rd Thursday of the month from 6:00 p.m. – 9:00 p.m., except for special occasions which will be announced in advance on the web site. The club also meets virtually the first Thursday of every month for a show and share. Other membership benefits include vendor discounts, library lending, wood auctions too name a few.

Dues: \$25.00/year Single; \$35.00/year Couple

Students free

If you are interested in becoming a member, you can complete an online application and submit your dues payment via PayPal, or you can fill out an application and mail it with your payment to the address on the application form.