



Finger Lakes Woodturners

A Chapter of The American Association of Woodturners



From The Chair – November 2014



Mark Mazzo

Last month we had a great meeting, demonstration and hands-on workshop with Derek Weidman. It gave us all a unique perspective on what can be accomplished with the lathe. Thanks to everyone who supported the club by participating in those events!

This month, we will have our very own Mike Brawley demonstrating turning and using Tops.

Tops are something that can take on many forms and we are lucky to have Mike as part of our club as he has extensive knowledge on the many types of Tops - how to make them and how to use them. This demonstration will give us all an opportunity to exercise our spindle turning skills to make items that are quick to produce and fun to use. This demo didn't end up being in November by accident - these Tops will make great Christmas gifts! Hopefully after you have seen what Mike presents you can bring some fine examples to show at our December meeting.

In November, we will also be holding elections for two FLWT Board of Directors positions. We will be voting on the Vice President and Treasurer positions. These positions will transition over the next two months and the new officers' terms will take effect in January. All Board of Director positions carry a 2 year term.

Our season is in full swing now – our first two meetings were great and there are more great things in store for the rest of the season. With our affirmative votes in October for library expenses and a new video camera, we will be making some purchases over the short term. Please check out the library in the coming months to take advantage of the new offerings.

Also, be on the lookout for a new camera to help improve the video quality during our meetings and demonstrations.

Until the November meeting, keep turning and keep learning!

--Mark

It's Time to Renewal Your Membership

Use Paypal by going to :
www.fingerlakeswoodturners.org and Governace Tab/Online Membership or
Send/give Cliff funds (check to Finger Lakes Woodturners Association at meeting or mail to:
Cliff Weatherell 139 Westchester Ave
Rochester, NY 14609

Page	Contents
1	<ul style="list-style-type: none"> From the Chair by Mark Mazzo Membership Renew
2	<ul style="list-style-type: none"> Schedule It's That Time of the Year
3	<ul style="list-style-type: none"> Derek Weidman (National Turner) – Sculpting On The Lathe
6	<ul style="list-style-type: none"> Derek Weidman - Saturday Demo
8	<ul style="list-style-type: none"> Members Show and Share
10	<ul style="list-style-type: none"> Library News
11	<ul style="list-style-type: none"> Events Mentors
12	<ul style="list-style-type: none"> Sponsors Board of Directors
13	<ul style="list-style-type: none"> Log Processing Center (LPC) Instructions by Rich Van Hanehem

Schedule — It's That Time Of The Year

FLWT meetings are held from 6:45 to 9:00 PM (pre-meeting Show and Share starts at 6:00 PM) on the 3rd Thursday of the month each month. Our meetings are held at the Isaac Heating and Air Conditioning University classroom, 180 Charlotte St, Rochester, 14607. For more information, go to <http://fingerlakeswoodturners.com/>.

November	Mike Brawley – Tops
December	Terry Lund – Pepper Mill
January	Cliff Weatherell – Suspended Bowl
February	Dan Meyerhoefer – Finial Box
March	Sam Tischler – Lamp
April	Beth Ireland (National Turner) – Turning Outside The Box – National Speaker (Friday night meeting, Saturday demo, Sunday Workshop) see www.bethireland.net
May	Jim Hotaling – Fluting

"IT'S THAT TIME OF THE YEAR"

Jim Hotaling



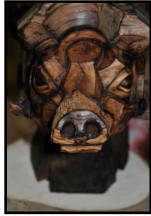
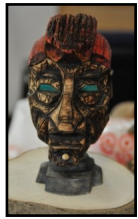
At the October meeting of FLWT, it was decided that we should raise the bar for turning tops by members from 250 to 300 tops! Membership currently stands at 60 plus, so that would equate to 5 tops per member. If 50% of our membership only turned tops, those members would have to turn 10 tops each. The tops will go to the Golisano Children's Hospital and Hillside Children's Center. Don't wait until the last minute to get started, get started now so we can reach our goal by our December meeting.

PS Turning tops helps develop tool control. What an opportunity!!



Derek Weidman (National Turner) – Sculpting On The Lathe

By Bruce Impey



Derek took the FLWT on a very extraordinary journey.

His art of multi axis turning sculptures of natural and whimsical animals and faces was influenced, he implies, by his drawing comic book faces as a youth, his father's hobby lathe and bird carving and studies in furniture making with Mark Sfirri. Derek wanted to become a comic book artist, but I'm not sure how this would have worked as he was only drawing faces. What he is doing now obviously works very well. I didn't have the impression his art form evolved but rather burst forth. Check out the amazing images on his website <http://weidmanwoodsculpture.com/> and elsewhere on the net by searching his name.

Derek encouraged us not to underestimate the risk of that piece of wood flying off the lathe. Use a face shield and start the lathe at minimum rpm and move up to a safe speed. Keep your hands completely behind the tool rest (think about it). In the demonstration he whacked the back of his work piece pretty hard with the heavy tool handle and called it "calibrating" the piece. I thought he was joking but later in the workshop saw him do this again without comment and I realized he was asking the wood if the centers were going to hold, if they were really going to hold.

Derek got started on the lathe sculptures with the simple idea that he could turn a nose on a face by moving the piece around between centers. The exercise in our workshop was this first project repeated. It is a series of simple steps which we all could copy, but what we did was scripted, not the same as having this in our imagination in 3D before the first cut. We got to see his remarkable spatial imagination at work on Friday night with an unplanned owl, and again on Saturday with a Halloween witch. He took suggestions for his demonstration piece, picked something he hadn't done before, made a rough outline on the board, studied it for a moment and then went to the lathe. An amazing process to watch, but as Derek said, he's "spent the time to learn this language". His advice to us was to work towards an idea. If you strive for perfection, you will never surprise yourself. Never work towards something exactly, work towards the idea and see what happens. Then you might surprise yourself. Derek doesn't plan ahead what he will turn when he teaches. He would rather show how he solves problems along the way as part of what he is teaching.

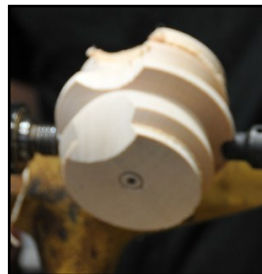
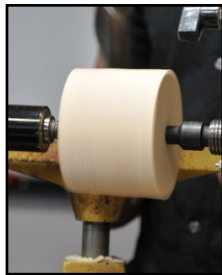
Derek says the Golden Ratio has nothing to do with his work. Each axis has an appropriate ratio and they all have to work together...talk to each other. When symmetry is desired he advises flipping the work end for end as a defense against the tendency to favor the dimensions toward one's dominant eye. The lathe is perfect for giving 360 degree symmetry and a certain amount of bilateral symmetry is imposed. He wants the piece to read symmetry but not be exact. There are many ways to make perfectly smooth surfaces, but no other way to duplicate the tooling marks of the lathe. He is using the lathe as a rotating platform for carving, so Derek is slower than a regular woodturner but much faster than a regular wood carver. I think there would be nothing "regular" about anything he does.

Derek Weidman (National Turner) – Sculpting On The Lathe (con't)

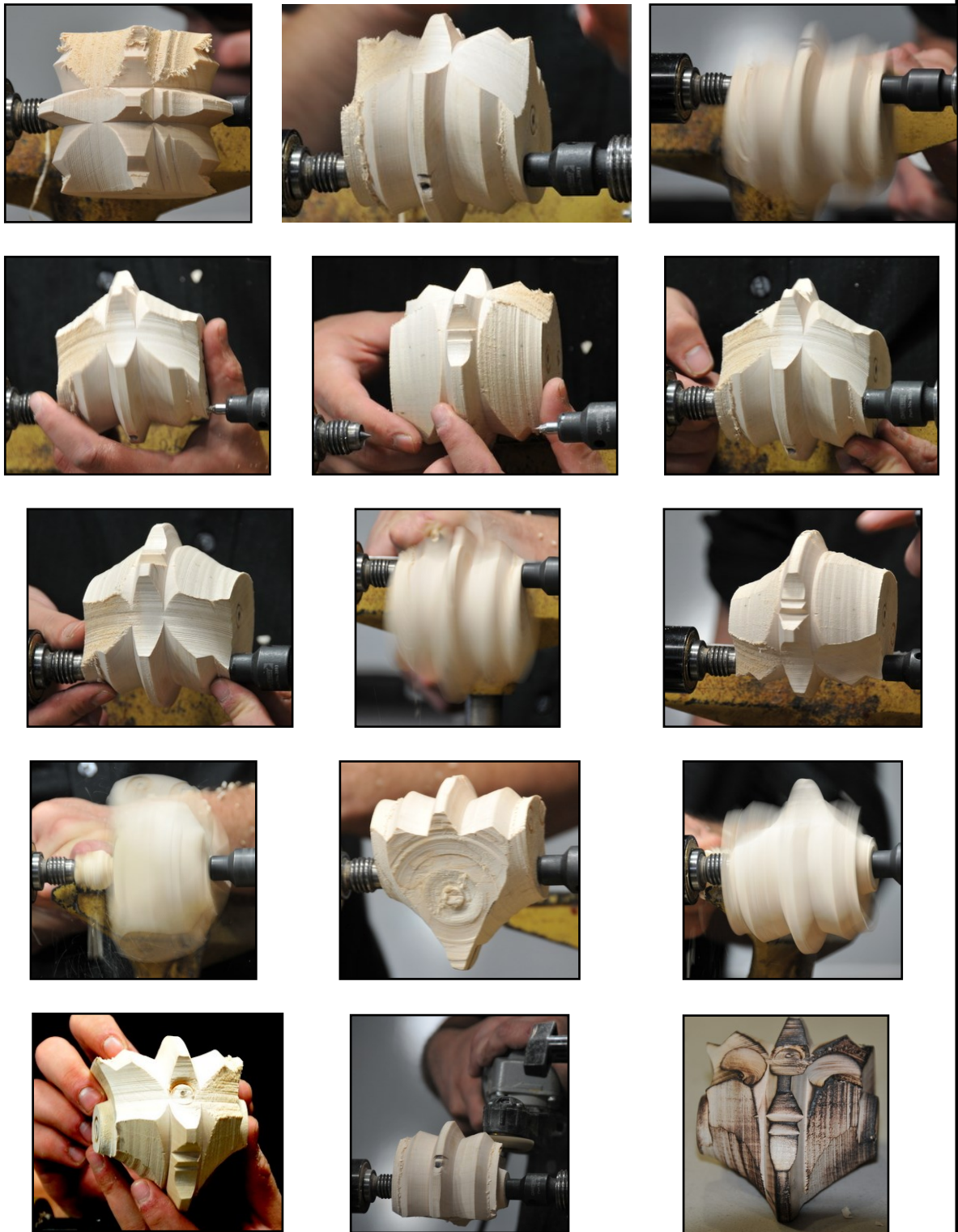
When turning on the second or subsequent axis the horizon at the top is what you are cutting into and the solid is the back of the head that you are not going to cut. When changing axis, put the centers as far away as you can from the feature you want to cut. There were about six basic steps in turning the workshop example, which he demonstrated twice before we made our first cuts. I am not going to attempt writing the instructions.

In the way of turning tools Derek used a roughing gouge, a couple of small gouges and a thin parting tool, used like a skew for details. He says he is not really a skilled woodturner, and he not only doesn't worry about toolmarks or the marks from the centers, they add to the piece. He uses a "safe center" so that a catch is not a disaster, and there are plenty of catches. A catch is also an opportunity to inspect the work! I know this kind of center as "cup dead center". Derek is a habitual tailstock tightener. He likes wet timbers and holly is the favorite because of its close homogenous grain and light color. On larger pieces he will drill holes in the base to help with drying, drill out the pith and apply pentacryl to help stabilize the wood.

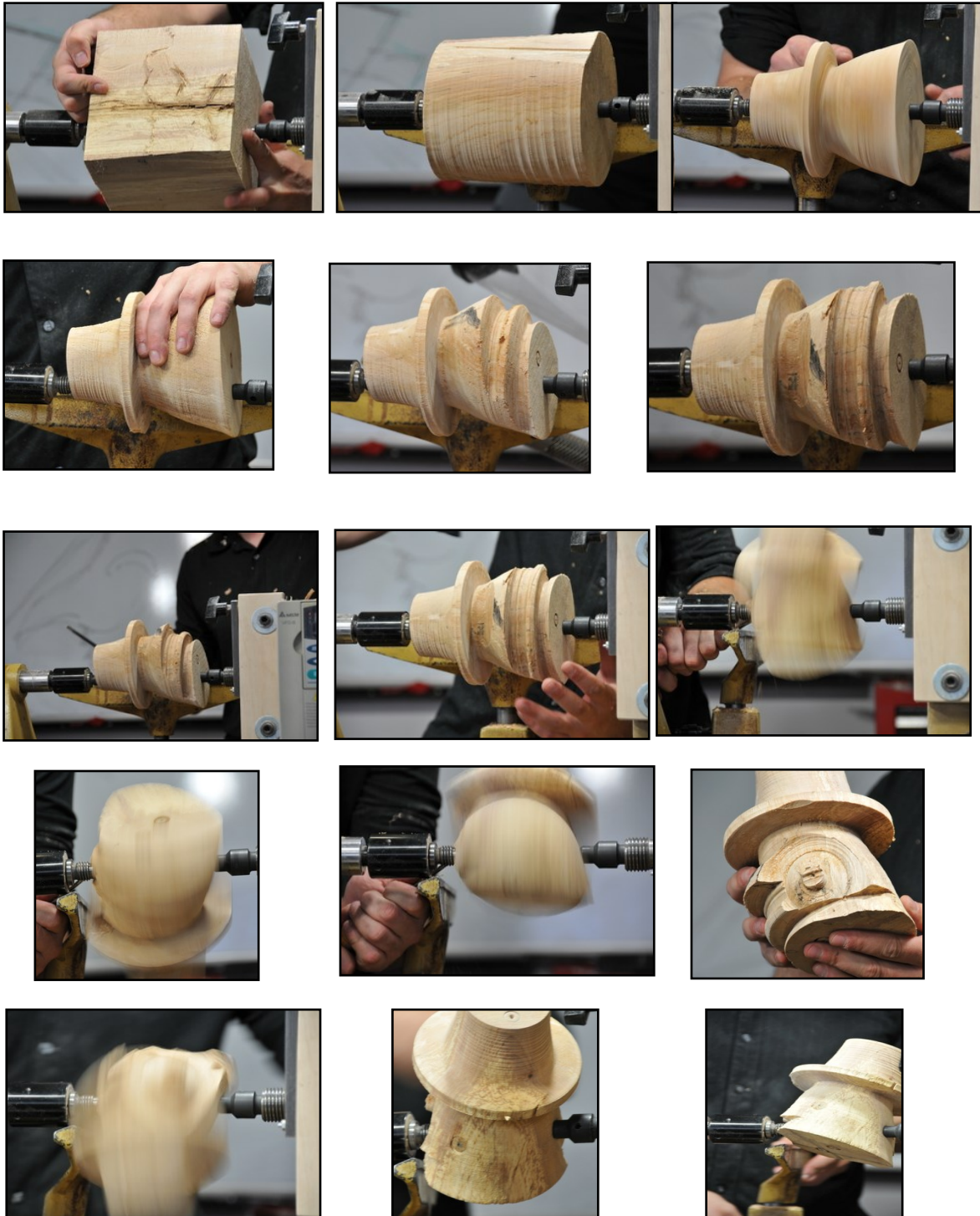
Dry wood will not work and soft wood will not work. Derek doesn't like sanding because it takes away the tool marks (and he doesn't like sanding). He leaves the toolmarks or even adds to them. A blowtorch brings out contrasts and cleans off fuzz, which is part of resolving the work. The black white contrast is an advantage of holly or other light colored wood and the level of charring brings out color subtlety. For further resolution of the surface; colored markers (Copic are the best but Prism works), a pyrography (wood burning) tool, Forstner bits, an Arbortech for nice big circular marks, a belt sander with hood exposed, various Dremel carbide burrs, drywall (Rotozip) bits and abrasive pad wheel in an NSK power carver. Derek likes the teaching part of his profession and is active more in that over the past year. He says it is really rewarding seeing people use his techniques and making something. He won't be offended if someone takes his ideas and runs with them, in the least. He is a first class teacher, not taking himself too seriously, listening carefully to any question and generous with his information. He says all of these complex shapes are just a series of simple steps, so build up an understanding the only way possible, practice.



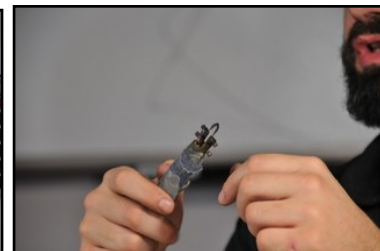
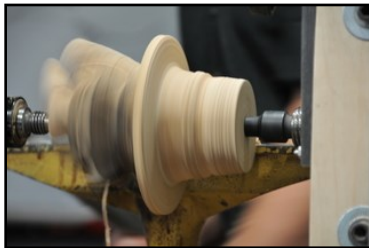
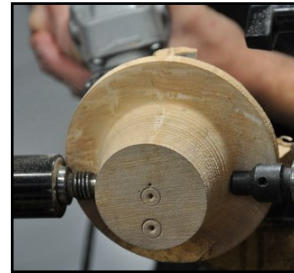
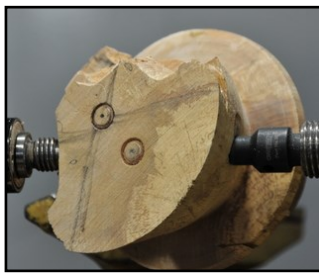
Derek Weidman (National Turner) – Sculpting On The Lathe (con't)



Derek Weidman (National Turner) – Sculpting On The Lathe
Saturday Demo — Sculpting a Witch



Derek Weidman (National Turner) – Sculpting On The Lathe
Saturday Demo — Sculpting a Witch
(con't)



Members Show and Share



**Gary
Russell**



**Dave
Gilbert**



**Harry
Beaver**



**Albert
Filo**



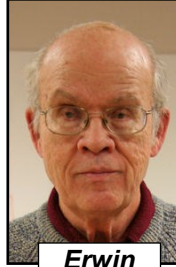
Members Show and Share



**Jim
Echter**



**Jerry
Sheridan**



**Erwin
Tschanz**



**Ken
Klassen**



**Dave
Harp**



**Clifford
Weatherell**



LIBRARY NEWS



It didn't take me long to spend all my Library funds for this year. I was able to get 16 books and DVD's thanks to a whopping 25% discount at Craft Supplies (CS). I guess you need to know the right people there. By the way, if anyone would like to do a group purchase and get the CS Club discount price, let me know.

Our new additions are:

DVD's from AAW

Skill Building Projects with Mark St Leger
2010 Instant Gallery & Critique, Annual Symposium Hartford, CT
David Ellsworth, The Spirit of Woodturning

Other DVD's from CS and the web.

Left Brain, Right Brain by Cindy Drozda
Finial Star by Cindy Drozda
Bat Houses: Turning Halloween Ornaments by David Best
Sharpening Woodturning Tools by Mike Darlow
The Definitive Beginner's Guide by Tim Yoder
Holiday Turnings by Tim Yoder
Turning Acrylic Materials by Barry Gross
Turning Toys Richard Raffin

Books

Carving on Turning by Chris Pye
Small Woodturning Projects with Bonnie Klein
Woodturning Projects by Mark Baker
The Creative Woodturner by Terry Martin
Turning Miniature Birdhouses by Dick Sing

Now that is a pretty good list of new items. In fact, most of these were borrowed last month. I hope I get good reviews, hint - hint. As was the case last year, I am requesting that all new items be taken out for one month only - no renewals. So please get them back to the Library when due until everyone has a chance at them. All other materials may be taken out for a month at a time to paid-up Club members and may be renewed in person, by phone or e-mail. Returns have been pretty decent so keep up with the good work.

For now- keep learning and turning.

Your Librarian,
Gary



EVENTS AND MENTOR CONTACTS

Local and National Woodturning Events of Interest

Year/Date	Event	For More Information
June ,25-28 2014	AAW Symposium—Pittsburg, PA	www.woodturner.org/
March 28-29, 2015	Totally Turning- Saratoga Springs City Center	http://www.nwawoodworkingshow.org/

Mentor Contacts¹

Name	Day Tel	Eve Tel	Email	Turning Skills / Specialty
Doug Crittenden	924-5903	924-5903	cleo99@frontiernet.net	General turning
Ed DeMay	406-6111	924-5265	edemay@rochester.rr.com	Bowl turning, dust collection
Ward Donahue	334-3178	334-3178	wddonah@frontiernet.net	Spindle & hollow turning, coring, sharpening
Jim Echter	377-9389	377-9389	jechter@rochester.rr.com	Spindle & faceplate turning, sharpening
David Gould	245-1212	245-1212	D2sGould@aol.com	Bowls, plates and hollow-forms
Jim Hotaling	223-4877	223-4877	jhotaling2198@aol.com	Christmas ornaments
Ed Lehman	637-3525		eljw@rochester.rr.com	General turning
Ralph Mosher	359-0986	359-0986	2rmosher@rochester.rr.com	Bowl turning, Boxes, Sharpening, Tool control
Dale Osborne	(315) 524-7212	(315) 524-7212	dborn3@rochester.rr.com	General turning
Gary Russell	227-8527		cngRussell@gmail.com	General turning, bowls, ornaments, finials
Erwin A. Tschanz	271-5263 (Dec – Mar)	271-5263 (Dec – Mar)		Historical, bowls, plates, goblets, boxes, bone, antler

1. Here's a great way for you to improve your turning skills. FLWT has award winning and expert turners who, at no cost, are willing to share their expertise one-to-one with other club members. A mentoring relationship might be as simple as getting a mentor's advice in a one time conversation. Or, it might include regu-

lar hands-on sessions over a lathe. The exact nature is up to you and your mentor. If you feel you could benefit from mentoring, organize your thoughts about your needs and contact an appropriate volunteer mentor above to determine if he or she is a match and available. ♦

SPONSORS

ISAAC
Heating & Air Conditioning

When you need us, we'll be there. ®



Furnaces • Air Conditioners • Water Heaters • Dehumidifiers • Duct Cleaning
 Gas Fireplaces • Home Energy • Plumbing • Generators • Insulation • Boilers

IsaacHeating.com

(585) 546-1400

ROCKLER
 WOODWORKING AND HARDWARE



Phone: (716) 631-8922
 Fax: (716) 631-8944
 E-mail: store11@rockler.com
 5085 Transit Road Buffalo, NY 14221
 www.rockler.com

- FLWT members (must show membership card) receive a 10% discount.
- Excludes sale items, power tools & Leigh jigs, CNC, Festool, and Rockler Gift Cards.
- Valid at Buffalo, N.Y store only.
- Not valid with any other coupon

FLWT Board of Directors 2014/2015

Position	Name	Home Tel	Cell Tel	Email
President / Chair	Mark Mazzo	265-4002	978-1926	mark@mazzofamily.com
Vice President	Bruce Trojan		261-7230	trojanbd@frontiernet.net
Secretary	Sam Tischler	586-1417	908-295-3010	tischler.sam@gmail.com
Treasurer	Clifford Weatherell	737-7815	737-7815	canoe-
Librarian	Gary Russell	227-8527		cngrussell@gmail.com
Newsletter	Dan Meyerhoefer	671-5595		dtmblue@google.com
Advisor	Jeffery Cheramie			
Advisor	Ralph Mosher		359-0986	2rmosher@rochester.rr.com

Log Processing Center (LPC)

Rich Van Hanehem

This LPC was a modification of one that appeared in AAW magazine a few years ago (2010). Some modifications of that original were made by Lee Tourtelotte et al. of the Minnesota Woodturners Association. The original designer has since incorporated these modifications into his original design. Lee gave me permission to share these plans widely, so...

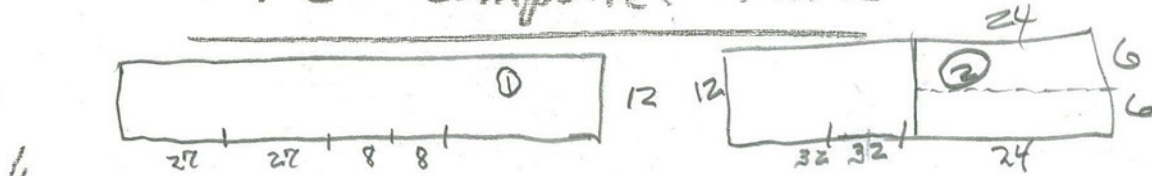
Perhaps many of you already have seen/built this LPC or one like it. If so, please excuse. If not, you might find that this increases both safety and ease of chainsaw cutting logs in half... no more balancing logs in precarious positions, hitting the ground with your chain, or having to bend over quite so far. It does work well, as I can attest. I built mine essentially the same as these instructions.

LPC that I built

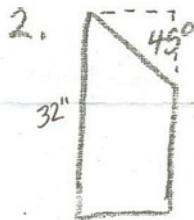


Log Processing Center (LPC)
(con't)

LPC Component Parts



BASE BOARD — 2 Req'd.
2" X 12" X 27"



Vertical SIDE BOARD — 4 Req'd.
2" X 12" X 32"



SADDLE CROSS PIECE — 2 Req'd.
2" X 12" X 8"



3 1/2"

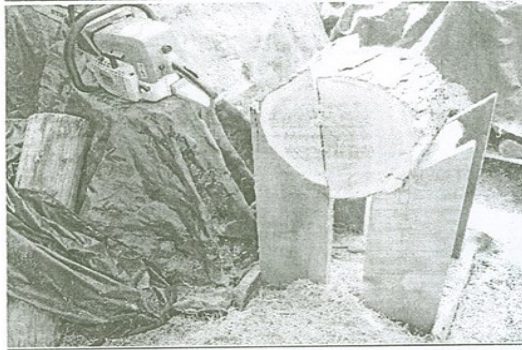
OUT RIGGER FEET
2" X 6" X 24"

— 2 Req'd.
(use 1 1/2" FOSTNER BIT
CUT OUT WITH BAND
SAW OR SABER SAW)

12/2012

Log Processing Center (LPC) (con't)

Minnesota Woodturners Association Project October 2012 Assembly Instructions for Log Processing Center (LPC) Kit



General Notes:

- Self Tapping, **square head**, screws are provided.
- Use a Square Head drill driver.
- Use of Pipe or Bar Clamps to securely hold the components together before driving screws is highly recommended.
- * Premarked (circled) spots for screws on each component part.

Kit Components:

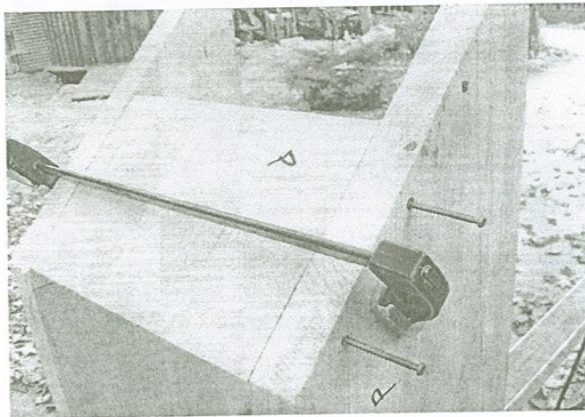
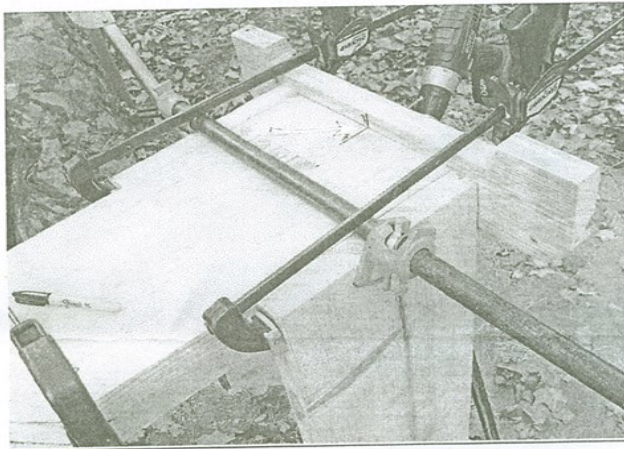
- 2 - 2"x12"x27" Base Boards
- 4 - 2"x12"x32" 45 degree angled side boards
- 2 - 2"x 6"x24" Outrigger Feet
- 2 - 2"x12"x8" Saddle Cross Pieces
- 1 Bag of Square Head, Rust Resistant Screws
- **Please read through all of the directions before beginning construction to assure that you understand each step.**

use these dimensions

Log Processing Center (LPC) (con't)

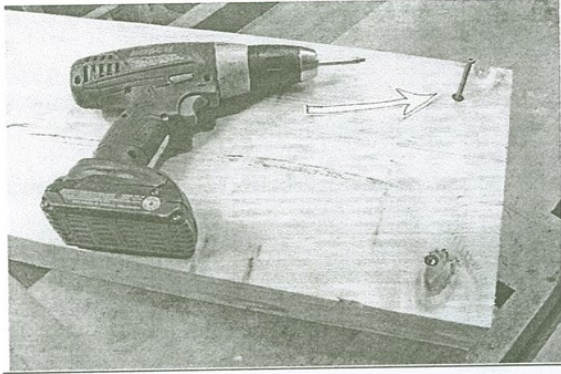
Step 5:

Place one 2"x12"x8" cross piece between two opposite side boards. Clamp the three boards tightly together and fasten each side with 2 -2 ½" screws through the premarked holes. Repeat for the other piece.



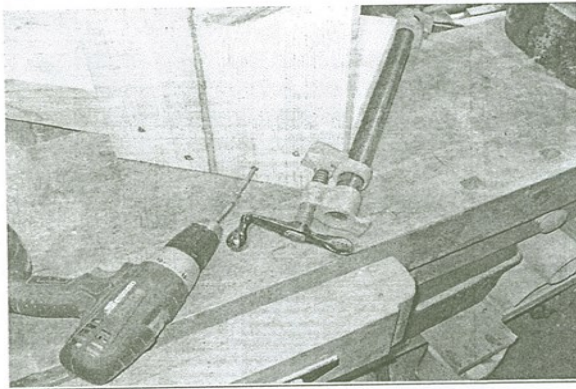
Log Processing Center (LPC) (con't)

Step 1:



On a flat surface, table or workbench, place the two 2"x12"x27" Baseboards one on top of the other with the board that has the premarked holes on top. This board will be the bottom baseboard. Screw the two baseboards together with four 2 1/2" screws.

Step 2:



Log Processing Center (LPC) (con't)

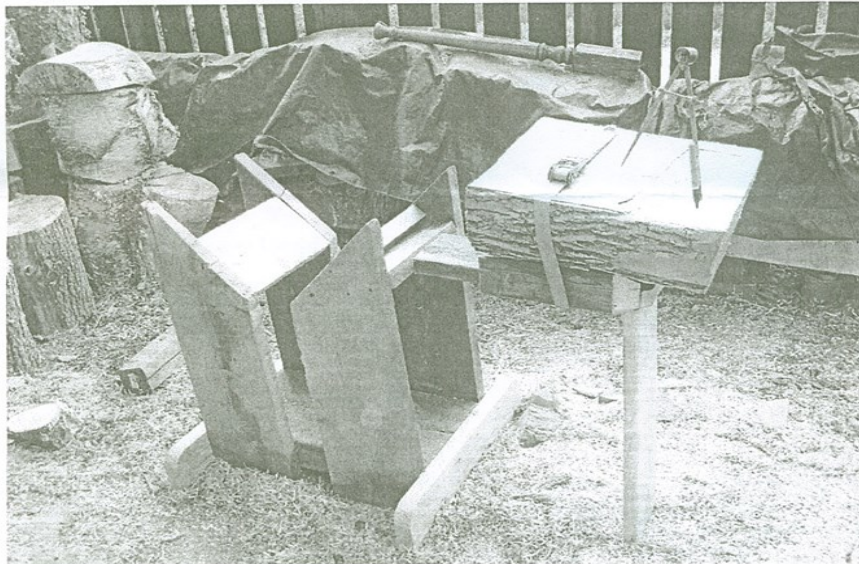
ASSEMBLY NOW COMPLETE!

You are now equipped to safely prepare bowl blanks with a chain saw.

The use of a short length (~ 48") nylon strap/ratchet load binder type clamp quickly fastens & supports extended length logs beyond the LPC for trimming back checked ends and/or cutting blanks to proper length.

A drawing, for adding an optional trim shelf useful for safely cutting off the blank's corner edges, (as shown below) is available.

Contact: leetourtelotte@msn.com



Lee Tourtelotte
Gar Brown
October 27, 2012

Log Processing Center (LPC)
(con't)

